

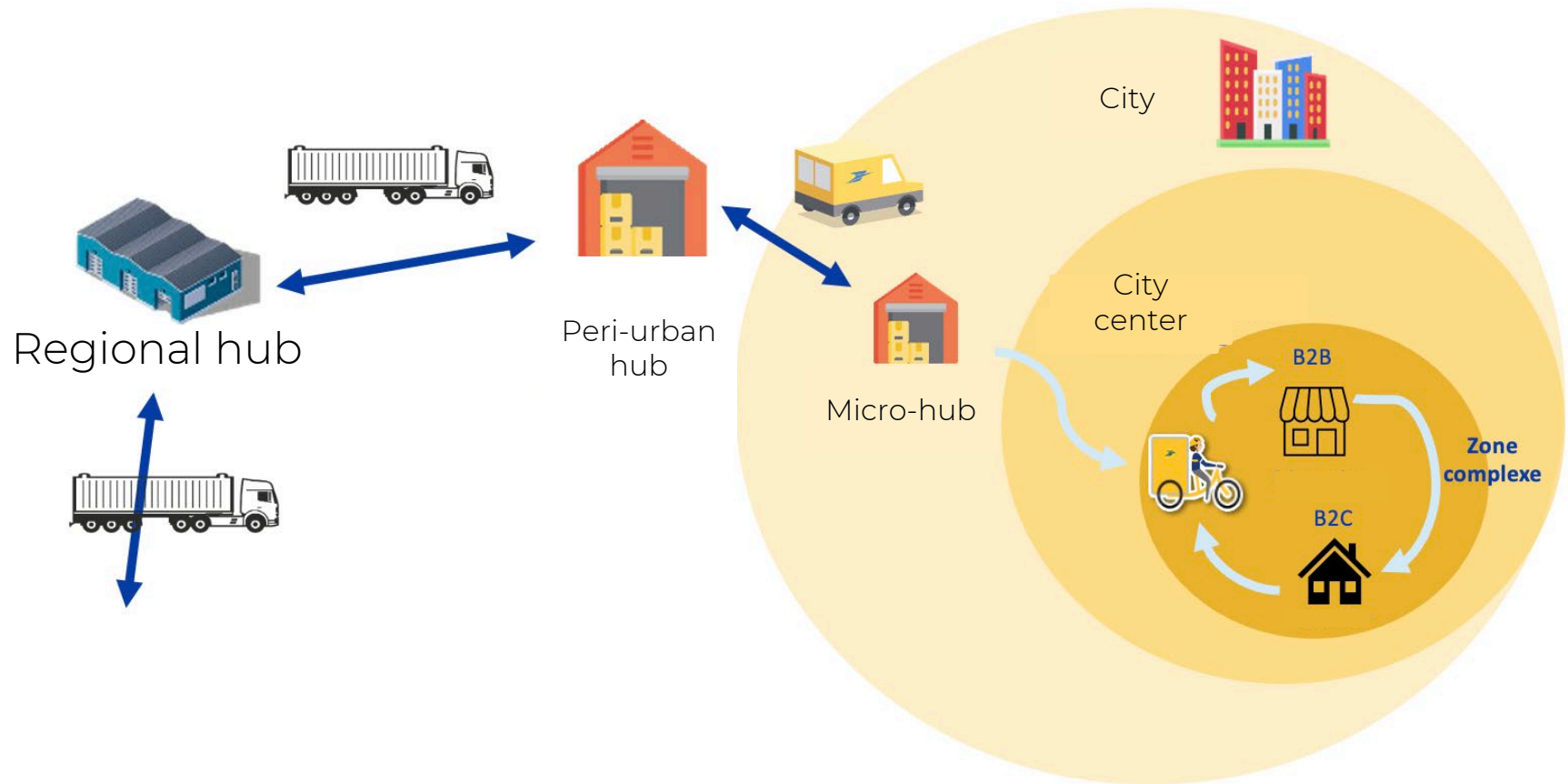
Physical Internet at La Poste

Johan Leveque – Head of R&D,
La Poste Group

IPIC2023
ATHENS
JUNE 2023



Introduction of cargo bikes



The introduction of micro-hubs allows the use of cargo-bikes that strongly decrease the time for delivering parcels at the cost of having less physical capacity.



Cargo bikes network implementation

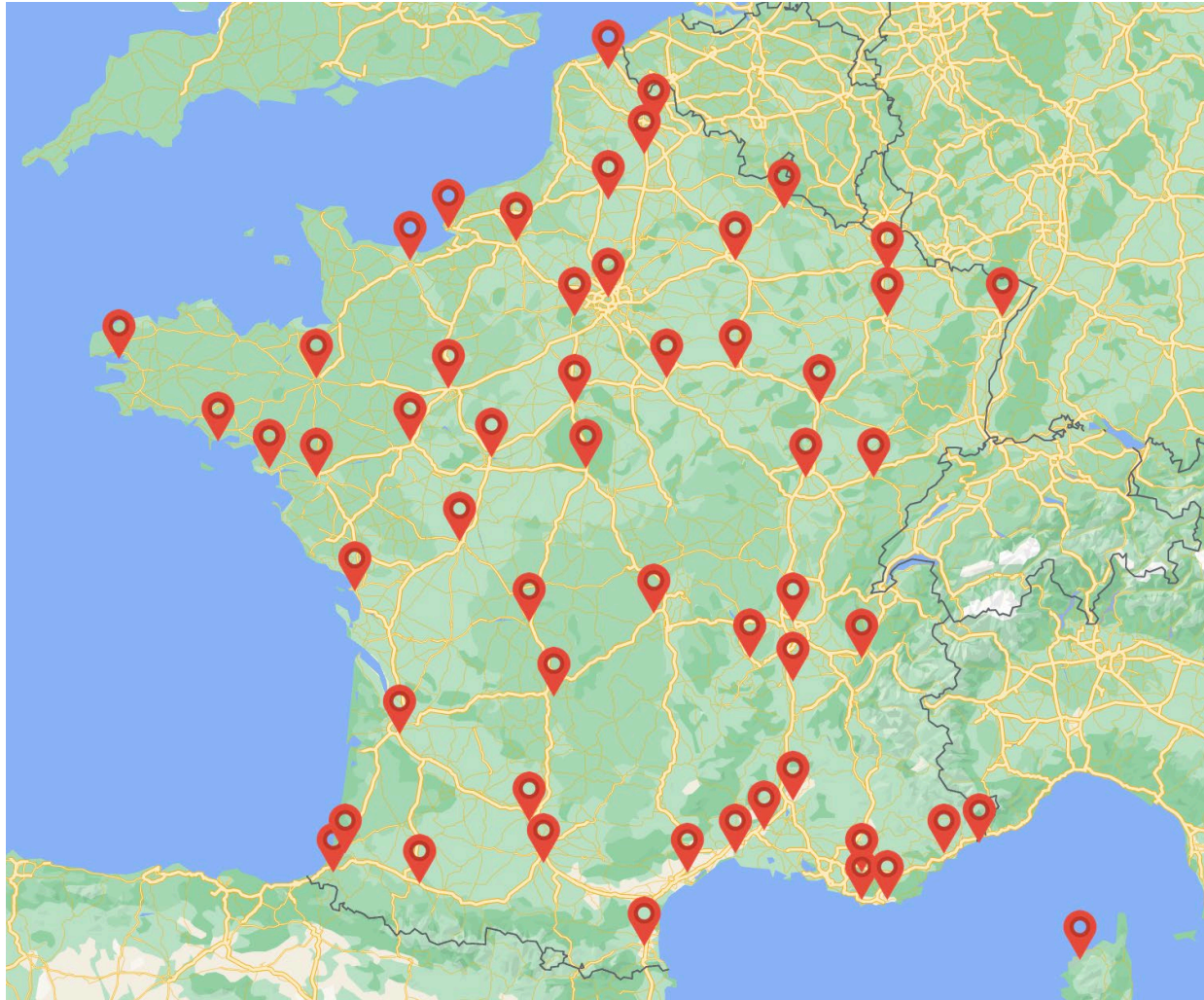


2019 : 1 city

100 000 Parcels/y



Déploiement du réseau de vélos cargos



2023 : +60 cities

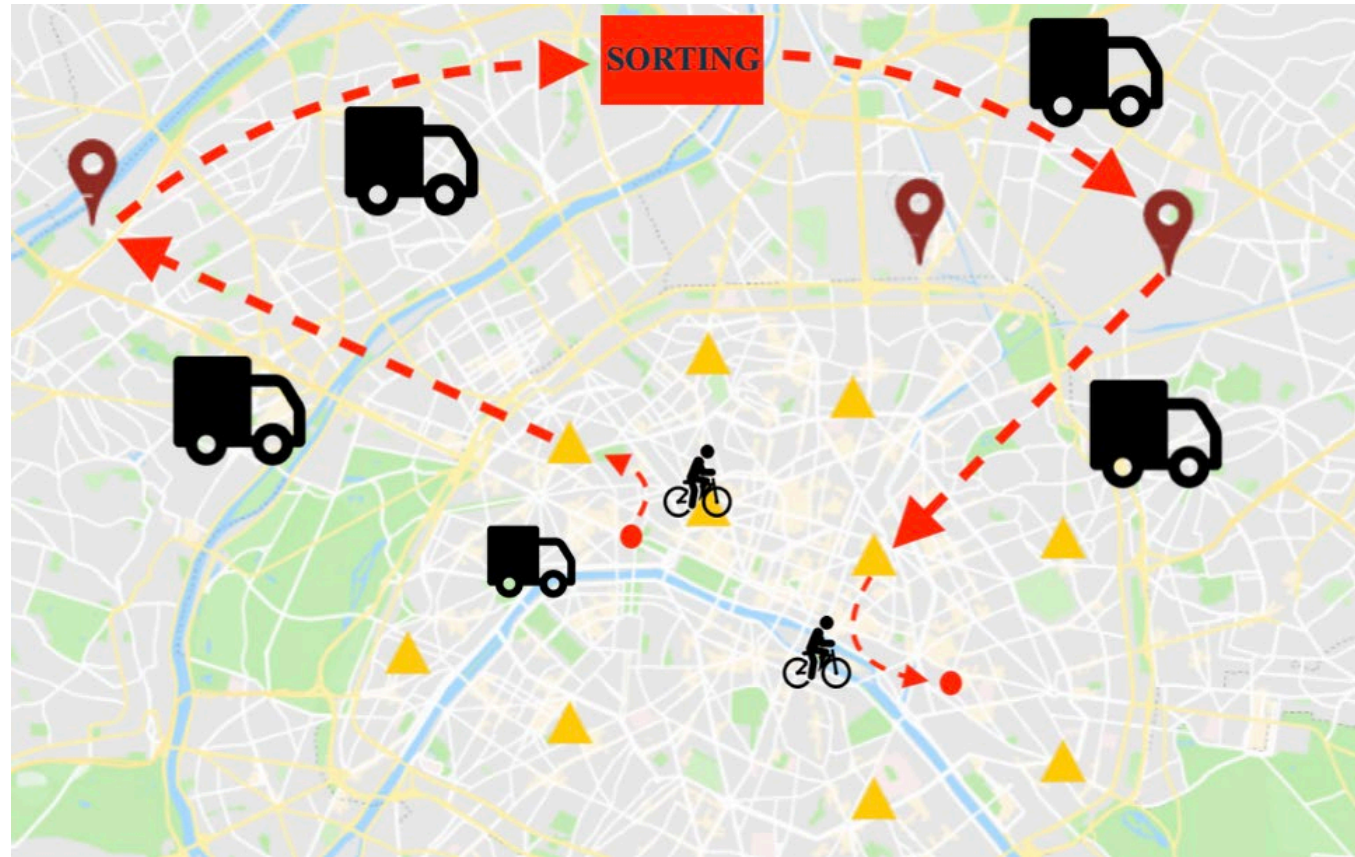
50M parcels/y



How are short distances treated ?

- Actual distance <5km
- Minimum delivery time : 2 days
- Distance : >100km
- Different operators : 9

Inner flows treatment is sub-optimal and forbids same day delivery in most of the time.



Reach of new service levels by collaboration

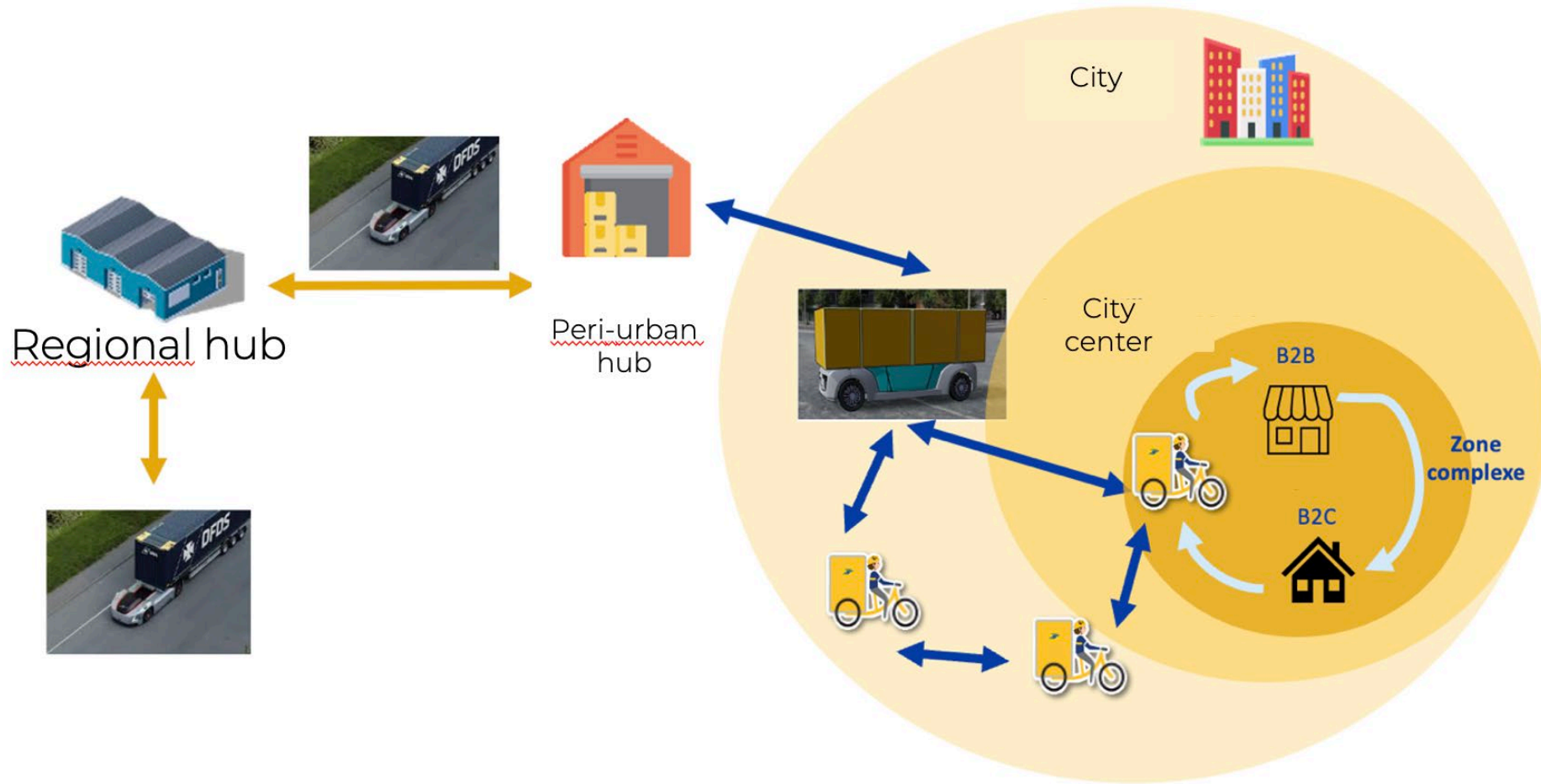
Introduction of micro-sorting capabilities in micro-hubs

Collaboration with other companies.

Roadmap to physical INTRANET



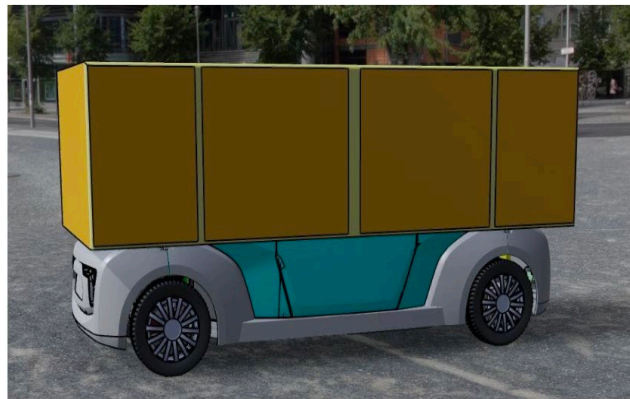
Introduction of autonomous vehicles and multimodal containers



Dynamic reloading of vehicles and mutualization with other delivery actors



Multimodal and standardized network



Physical Internet at La Poste

Johan Leveque – Head of R&D,
La Poste Group

IPIC2023
ATHENS
JUNE 2023

