



Living Labs as a strategic part of the European Cities Mission

Thomas Osdoba, NetZeroCities



**Funded by
the European Union**

This project has received funding from the European Union's Horizon Europe research and innovation programme under grant agreement No 101103954



1. EU Cities Mission

2. NetZeroCities support

3. Systems innovation

4. Living Labs



NetZeroCities Support to Mission Cities

NZC portal

- NZC community
- Knowledge repository
- Dashboard



Climate City Contract

- Commitment
- Action Plan
- Investment Plan



Climate Transition Map

- Guide to climate neutrality journey

City Advisors

- Support, connect and advise cities on the journey to climate neutrality



Specialist support

- Systemic innovation
- Financing expertise
- Citizen engagement
- Social innovation
- Technical expertise



Twinning programme



Pilots

- Call for funding innovative projects



Transition team

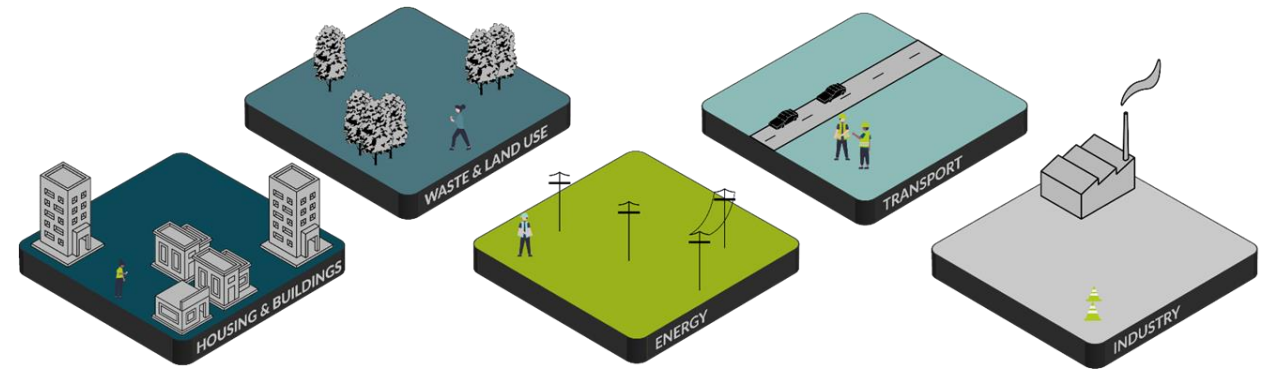
- Transition team playbook



Understanding Systems

Achieving a deep understanding of the challenge often requires much more time and effort than coming up with a solution. It becomes a core capability to map interdependencies and identify barriers impeding progress, gaps in current efforts, learnings from the past and potential levers for change.

This is a collective act as the full picture can only be achieved by bringing together all complementary perspectives



BUSINESS MODELS



Developing locally appropriate business models that remove barriers to change, enable successful project delivery, and maximise the benefits to the community and drive equity and prosperity long-term

CAPITAL ALIGNMENT



Capital planning is based on anticipating future needs and crafting specific approaches to mobilizing resources for the full spectrum of needed work. Next-generation of district-based finance, eg:

- Programme-based capital planning – Portland
- Portfolio-based equity model – Exeter, Sun Valley EcoDistrict

ECONOMIC STRUCTURES

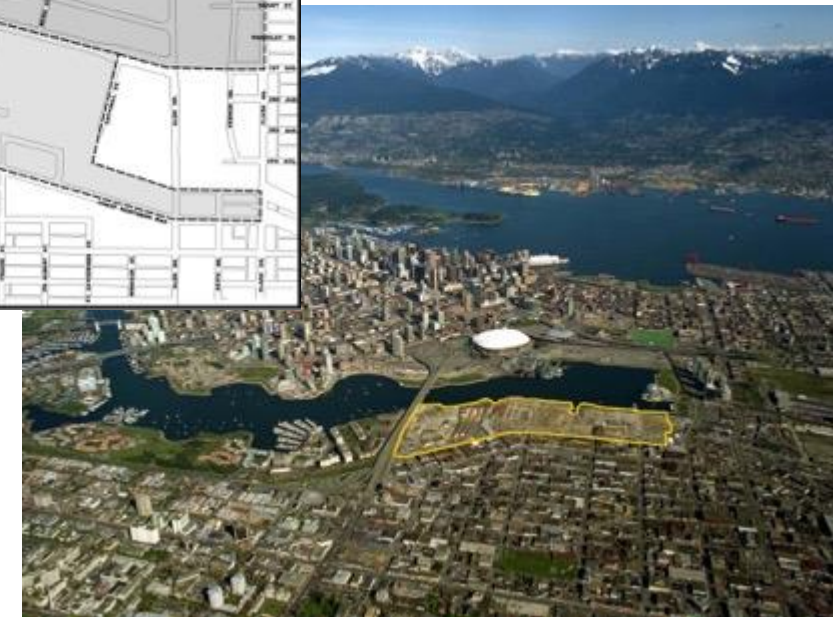
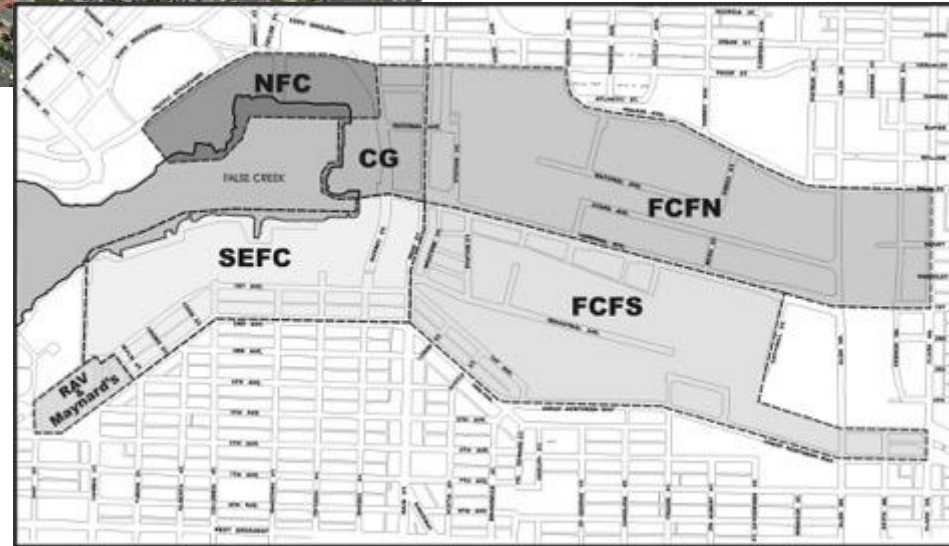


Each community/city needs to shape the local economic context/market to enable scaling of change activities over time.



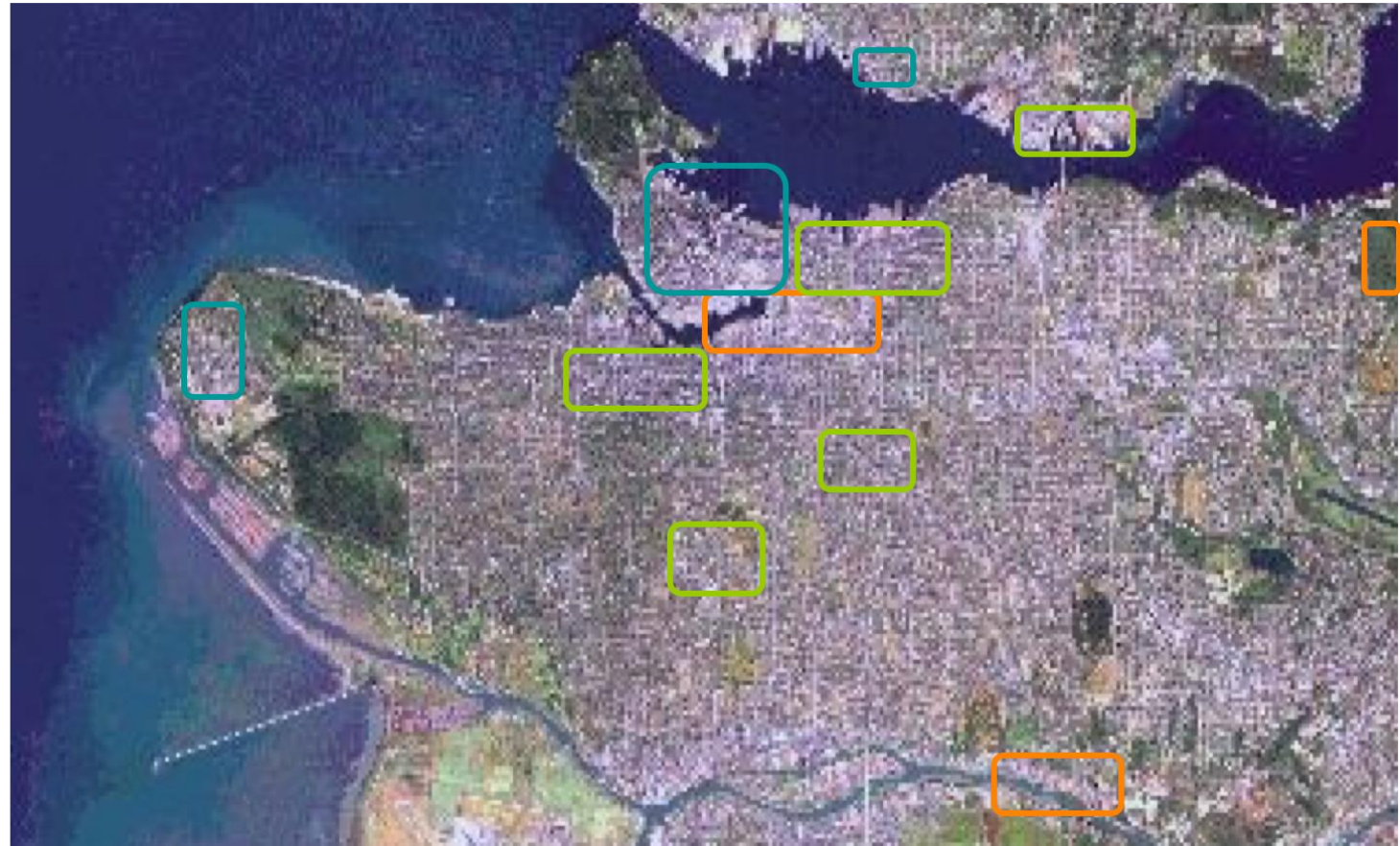
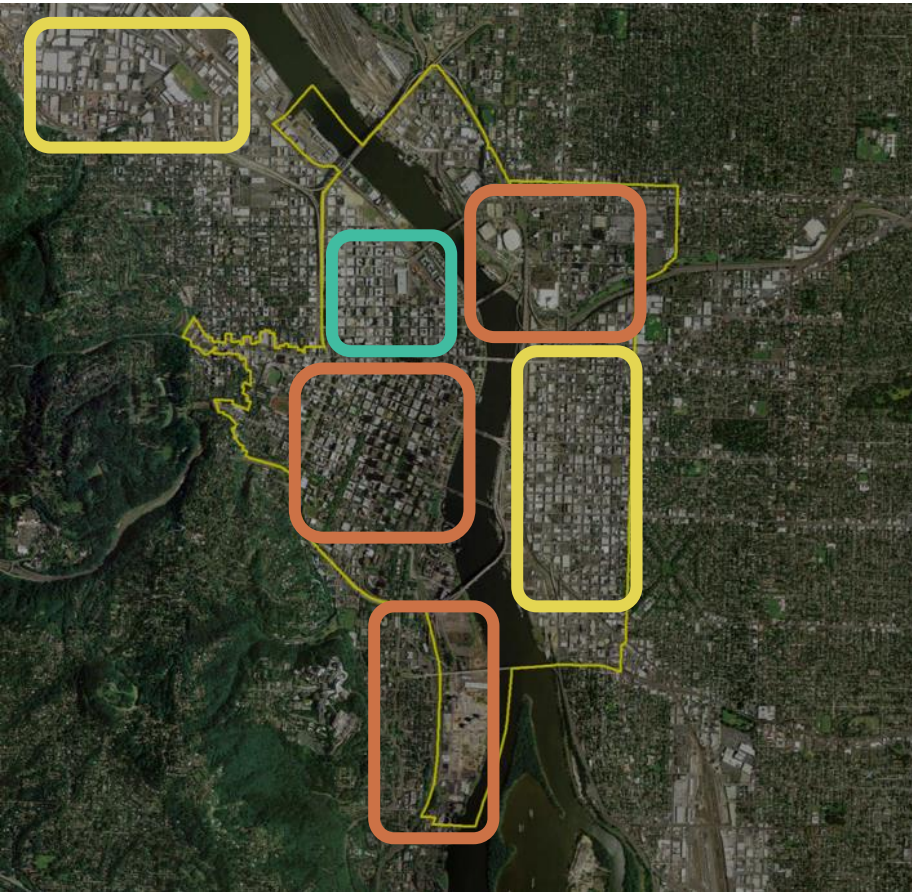
One innovation process transformed how one City thinks about building energy use

- Innovate and test at a neighbourhood or district scale
- Align policies, scale, and capital





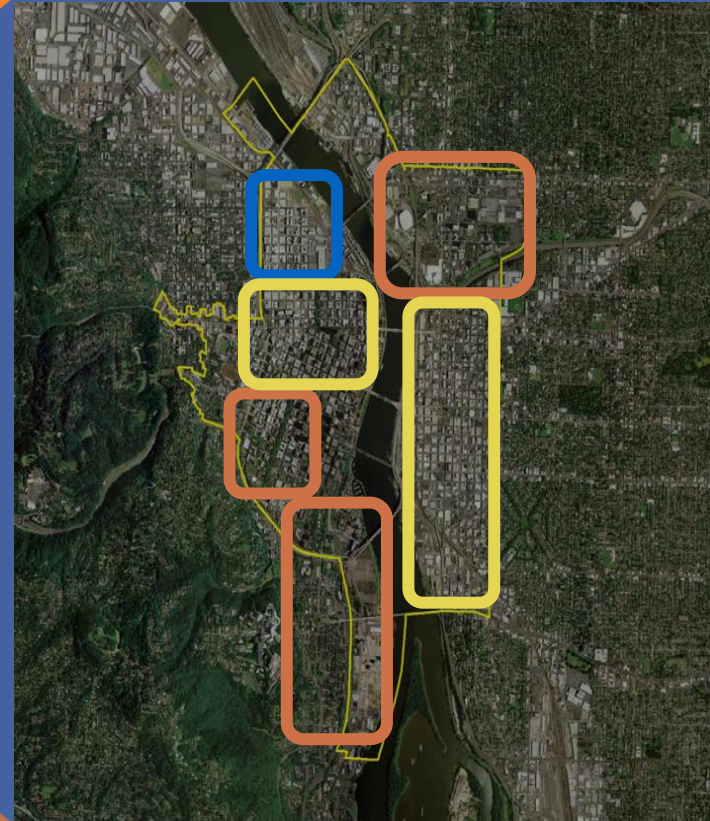
Replication of process and ambition – allowing specific, place-based innovations to emerge





Living Labs to accelerate innovation

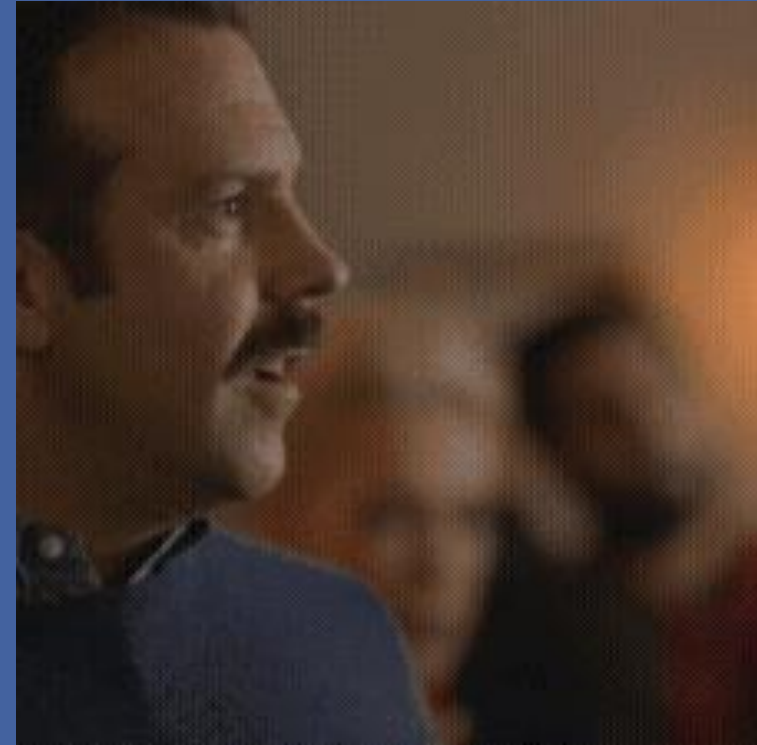
- Shared vision & goals
- City as a partner with business & community
- Tie to business strategies for competitive edge & growth
- Learn from both successes & 'failures'
- Scale by replication





Supporting Mission Cities

- **Build relationships and trust and appreciation for the challenge**
- **Working ourselves in this way**
- **Get to know each other – be curious**
- **Focus on the questions, not the answers**
- **Process design, cities have been sharing best practices for 20 years**





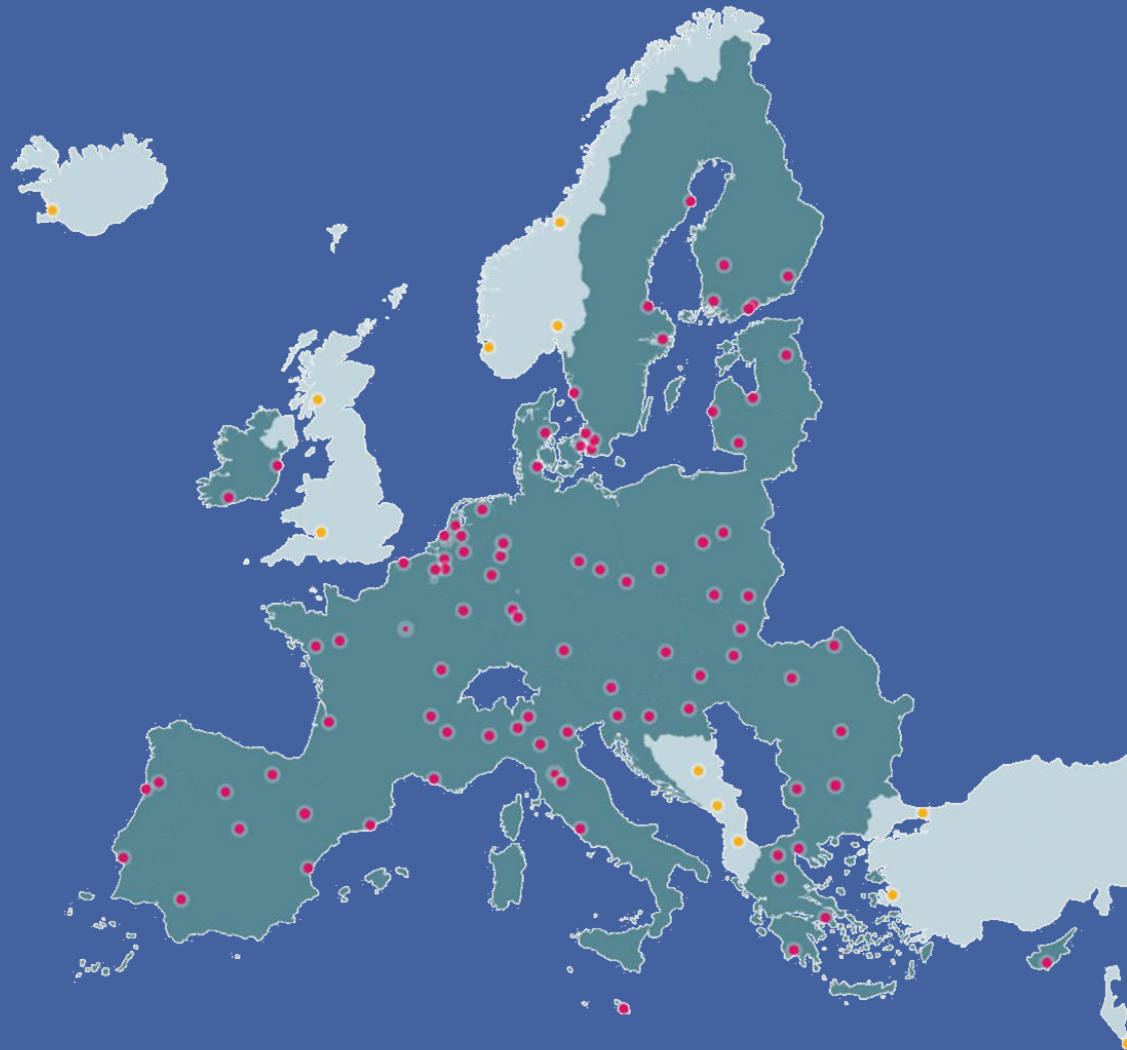
Stay in touch with the Mission Cities!



NET ZERO CITIES

EU MISSION PLATFORM

CLIMATE NEUTRAL AND SMART CITIES



www.netzerocities.eu



NetZeroCitiesEU



hello@netzerocities.eu



NetZeroCities EU



NetZeroCities