



Transmetrics

The planning tool for the Physical Internet

The planning tool for the physical internet

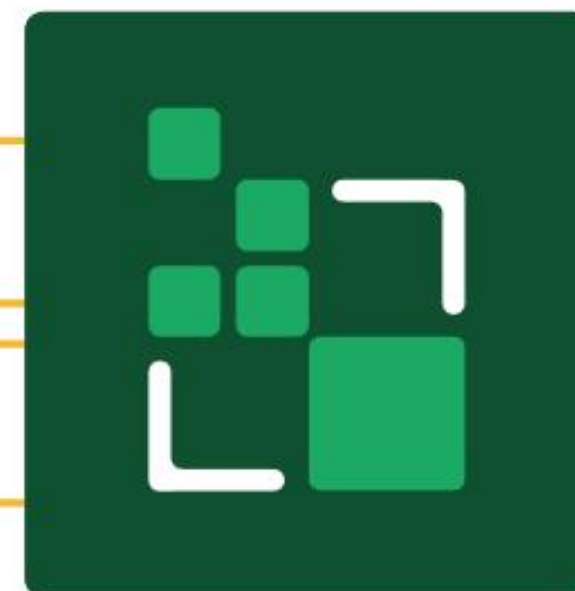
Today, logistics networks are mostly closed...

Closed, isolated networks

Reactive, unable to cope with demand shifts

Shortages of drivers and logistics assets

Static shipment routing



... in the future, they must become open and agile

Open, interoperable networks

Agile, redeploying capacity in anticipation of future needs

Optimal usage of drivers and logistics assets

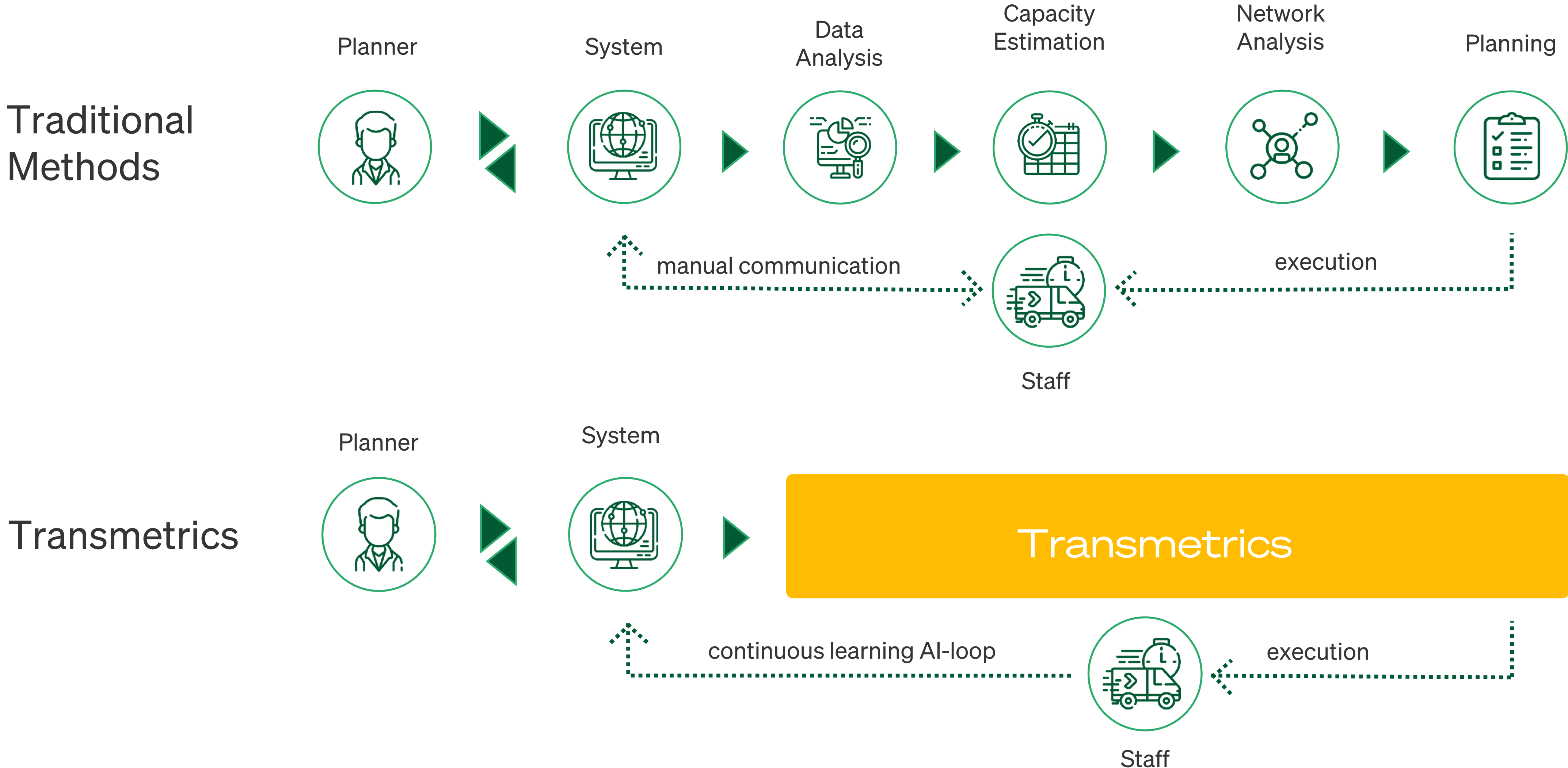
Dynamic shipment routing, changing on the fly to adapt to new developments

Planning is key in logistics

- Planning is key in logistics -a high complexity business with razor-thin margins.
- The success or failure of planning immediately reflects into the business



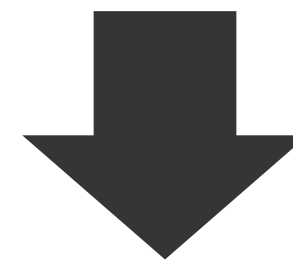
Transmetrics empowers logistics planning



All in one solution

Cleaning, analyzing, predicting and optimizing

 Transmetrics



System



Analyze



Plan



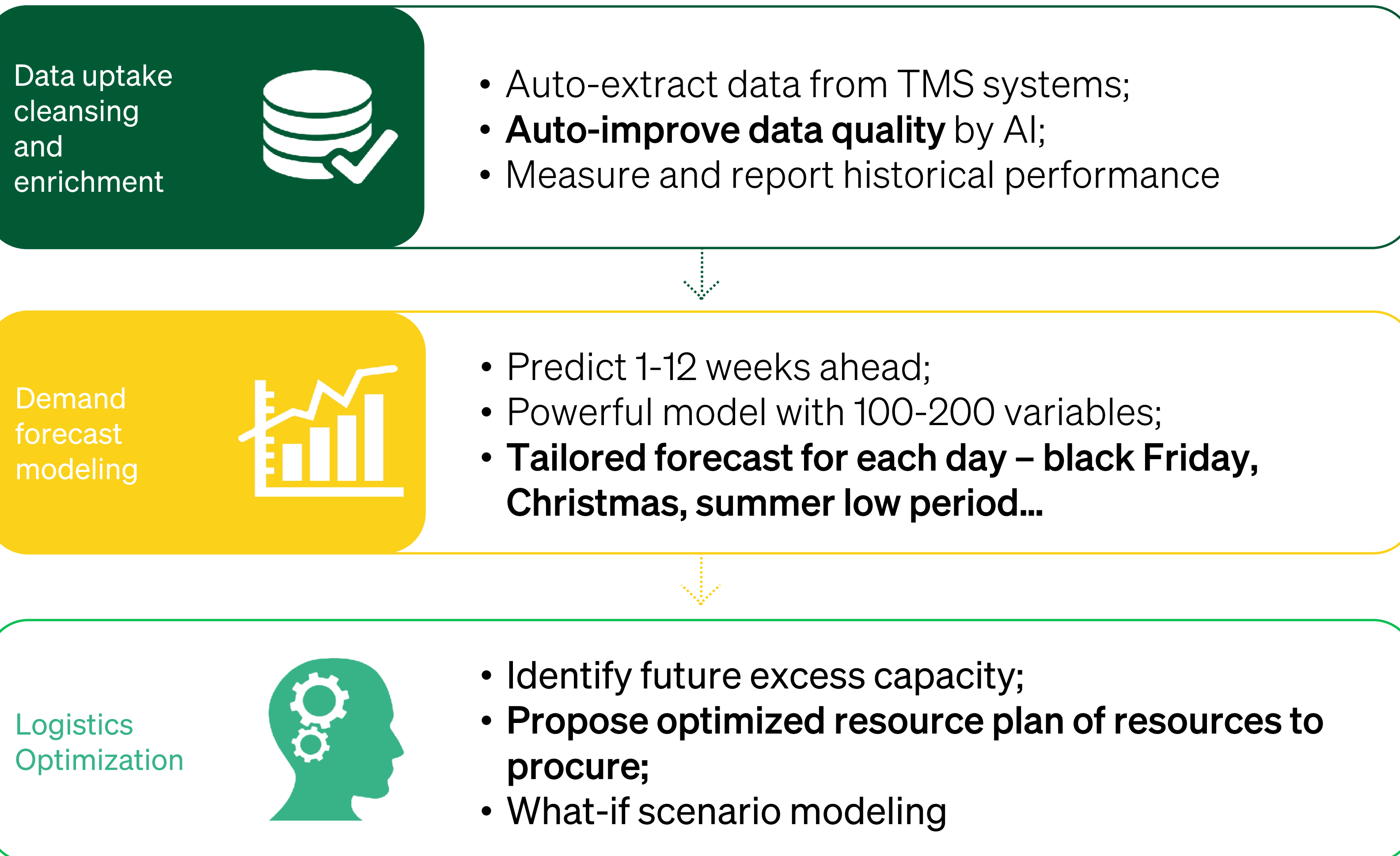
Predict



Optimize

Platform

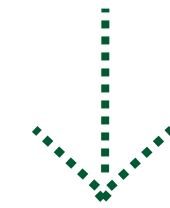
Transmetrics implements a Just-In-Time predictive planning process:



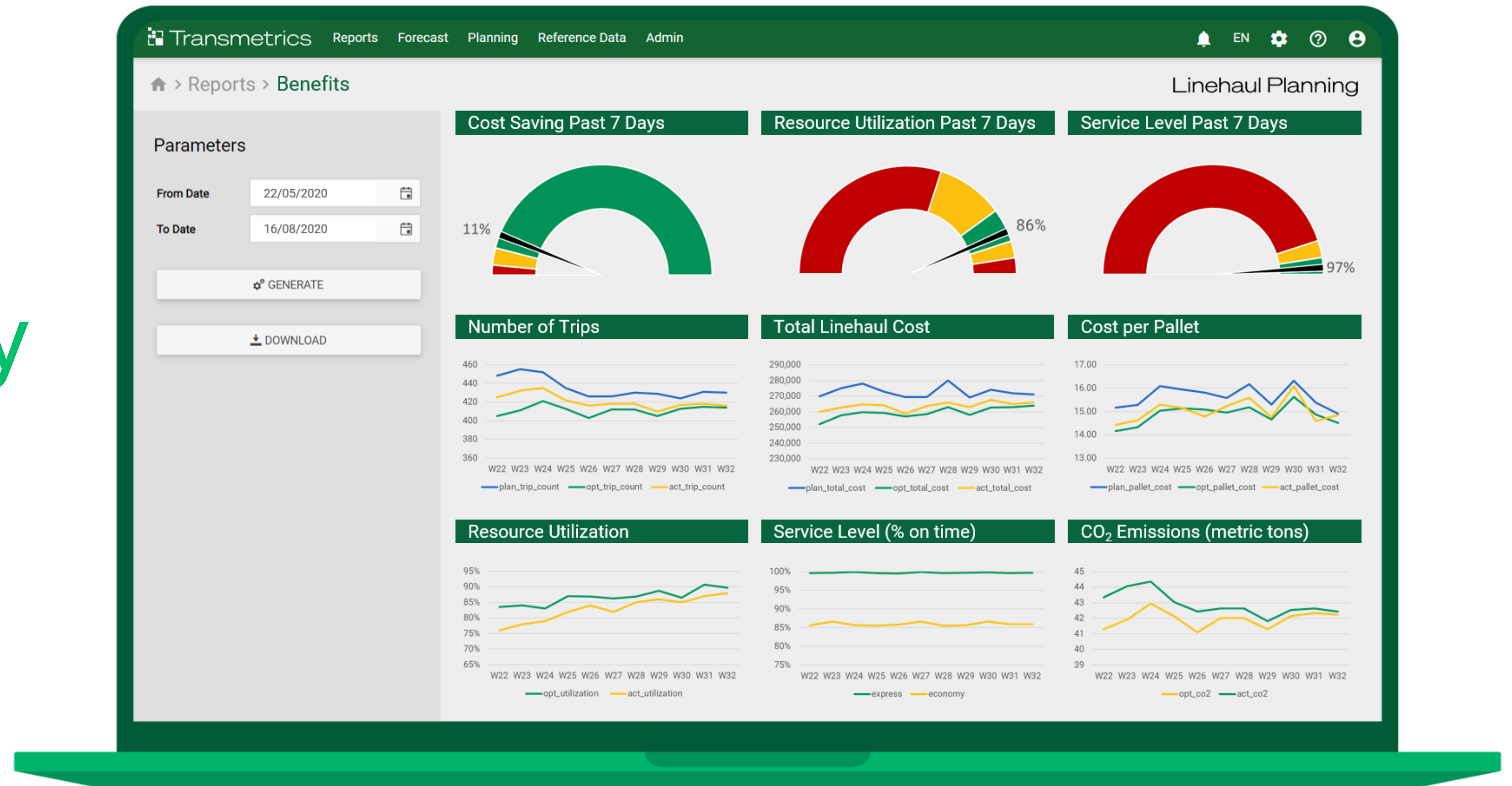
Data uptake
cleansing
and
enrichment



- Auto-extract data from TMS systems;
- **Auto-improve data quality** by AI;
- Measure and report historical performance



Transparency



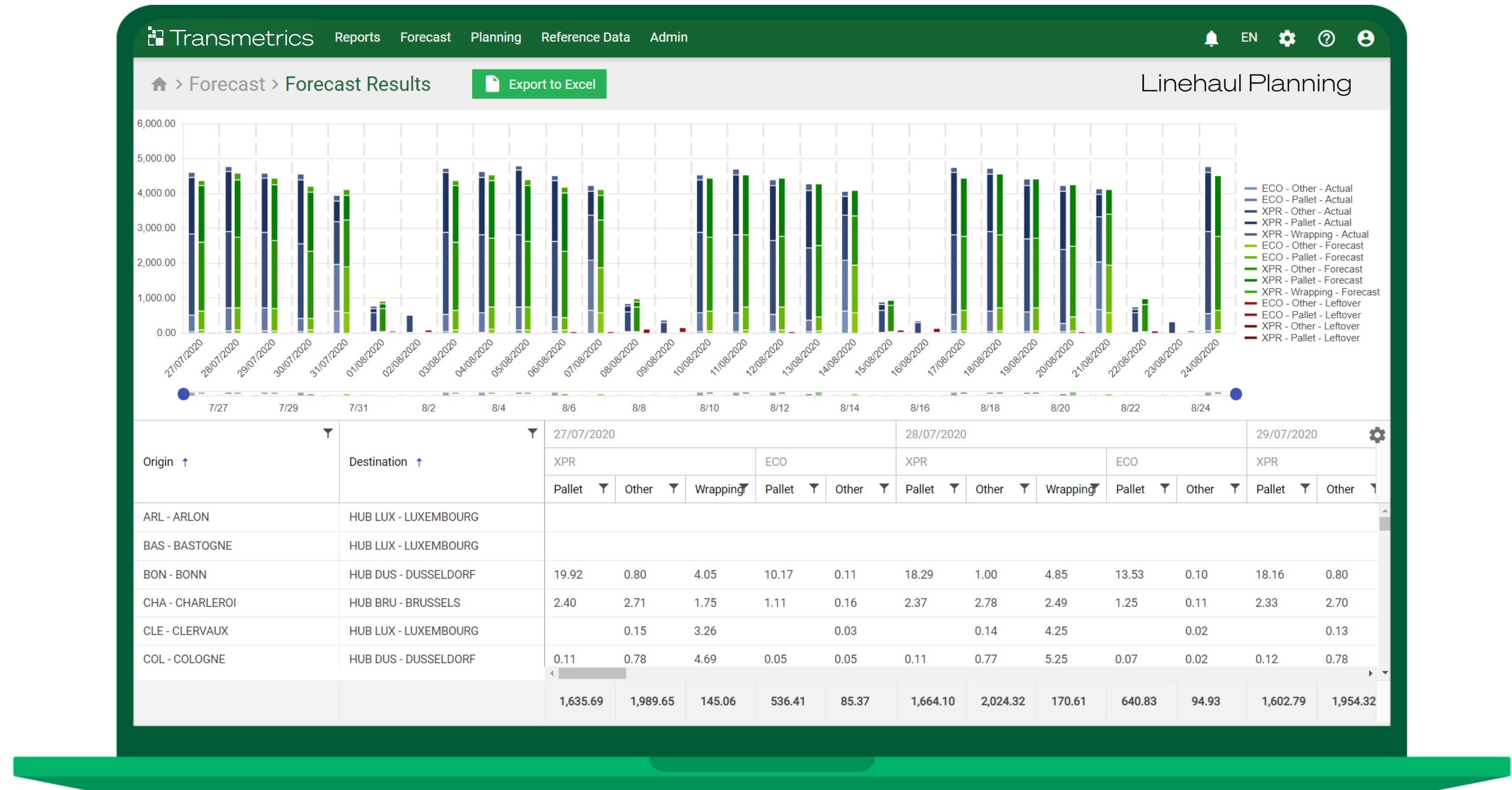
Demand
forecast
modeling



- Predict 1-12 weeks ahead;
- Powerful model with 100-200 variables;
- **Tailored forecast for each day – black Friday, Christmas, summer low period...**



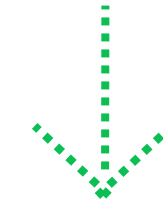
Forecasting



Logistics
Optimization



- Identify future excess capacity;
- **Propose optimized resource plan of resources to procure;**
- What-if scenario modeling



Optimization

Transmetrics Reports Forecast Planning Reference Data Admin

Planning Results [Download](#) Status: Augmented Linehaul Planning

Trip Ref.	Carrier	Start Time	From Terminal	To Terminal	Min Load Factor	Max Load Factor	
▶ HUB ANT-UB BRE	Shipline Ltd.	10/08/2020 20:00	HUB ANT - ANTWERP	HUB BAR - BARCELONA	98.38%	105.00%	🔍 DETAILS
▶ HUB ANT-UB BRE	Shipline Ltd.	15/08/2020 00:00	HUB ANT - ANTWERP	HUB BAR - BARCELONA	60.20%	91.28%	🔍 DETAILS
▶ UB ANT	Shipline Ltd.	12/08/2020 20:00	HUB ANT - ANTWERP	HUB BRE - BREMEN	105.00%	105.00%	🔍 DETAILS
▶ UB ANT	Linehaul department	14/08/2020 04:00	HUB ANT - ANTWERP	HUB ANN - ANTWERP-NORD	105.00%	105.00%	🔍 DETAILS
▶ HUB ANN-UB LUX	Two lines Ltd.	12/08/2020 20:00	HUB ANN - ANTWERP-NORD	HUB FRA - FRANKFURT	73.64%	97.40%	🔍 DETAILS
▶ HUB ANN-UB LUX	Ecotrans Ltd.	13/08/2020 20:00	HUB ANN - ANTWERP-NORD	HUB FRA - FRANKFURT	101.16%	105.00%	🔍 DETAILS
▶ HUB ANN-UB LUX	Ecotrans Ltd.	10/08/2020 20:00	HUB ANN - ANTWERP-NORD	HUB FRA - FRANKFURT	105.00%	105.00%	🔍 DETAILS
▶ HUB ANN-UB LUX	Two lines Ltd.	16/08/2020 16:00	HUB ANN - ANTWERP-NORD	HUB BRE - BREMEN	105.00%	105.00%	🔍 DETAILS
▶ HUB ANN-UB FRA	Two lines Ltd.	10/08/2020 20:00	HUB ANN - ANTWERP-NORD	HUB BRE - BREMEN	66.96%	105.00%	🔍 DETAILS
▶ HUB ANN-UB BRE	Shipline Ltd.	16/08/2020 12:00	HUB ANN - ANTWERP-NORD	HUB BAR - BARCELONA	79.15%	105.00%	🔍 DETAILS
▶ HUB ANN-UB ANT	Linehaul department	14/08/2020 20:00	HUB ANN - ANTWERP-NORD	HUB ANN - ANTWERP-NORD	33.31%	105.00%	🔍 DETAILS
▶ HUB ANN-UB ANT	Linehaul department	10/08/2020 20:00	HUB ANN - ANTWERP-NORD	HUB ANN - ANTWERP-NORD	4.02%	53.20%	🔍 DETAILS

◀ 1 2 ▶ CLEAR FILTERS 31 - 47 of 47 items

PLANNED RESOURCE UTILIZATION AUGMENTED TRIPS LEFTOVER VOLUMES TERMINAL OPERATIONS

How Transmetrics helps

We make an impact in three key areas



Shipment routing

- Pre-plan shipment flows
- Dynamical routing
- Leverage partner networks



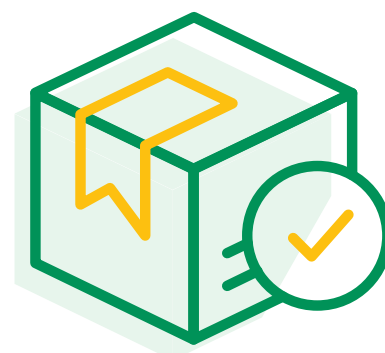
Procure capacity

- Long haul trucking
- Last mile services
- Warehouse workers



Position assets

- Swap bodies
- Containers
- Warehouse equipment



- Up to 10% savings in logistics cost
- Reduction of CO2 emissions
- Improvement of service levels



Augmented intelligence

The best of both worlds

AI

- Automated
- Unbiased predictions
- Big data
- Model updates
- Fall-back decisions



Human expert

- Experience
- Customer knowledge
- Market knowledge
- Vital for predictions in case of unreliable data

A black and white photograph of a man in a warehouse. He is wearing a knit beanie, a puffy jacket, and a plaid shirt. He is holding a tablet computer and looking at it. The background shows industrial shelving units filled with boxes.

**The logistics industry
generates vast quantities
of data and insights.**

Which are only barely used today:
only 12% of logistics companies use AI.

European

- EIT grant 50k EUR in 2015
- Horizon grant 1.7m EUR in 2020



Digital

**Horizon
Europe**



My dream

I wanted to work on a physical internet since I was a teenager.

That's why I started Transmetrics.

Glad to see all of you are there with the same vision.



News

Logistics is everywhere and it is constantly changing. A few headlines from just 2021 reflect the current state.

'I've Never Seen Anything Like This':
Chaos Strikes Global Shipping.

The New York Times

91% of surveyed executives acknowledge that forecasting in 2021 needs to look different.

**McKinsey
& Company**

Supply Chain Strains Sharpen Focus on AI.

THE WALL STREET JOURNAL.



We are



 Transmetrics

Transmetrics is a cutting-edge AI application built from the ground up to serve the logistics industry.

It can manage all planning and maintenance operations of an organization through modern technologies and has a positive impact on revenue, service levels and the environment.