



the mind of movement

INTEGRATED TRANSPORT AND LOGISTICS PLANNING

Devrim Kara

IPIC 2019
10 July 2019



the mind of movement

We plan and optimise everything which moves
people and goods worldwide.



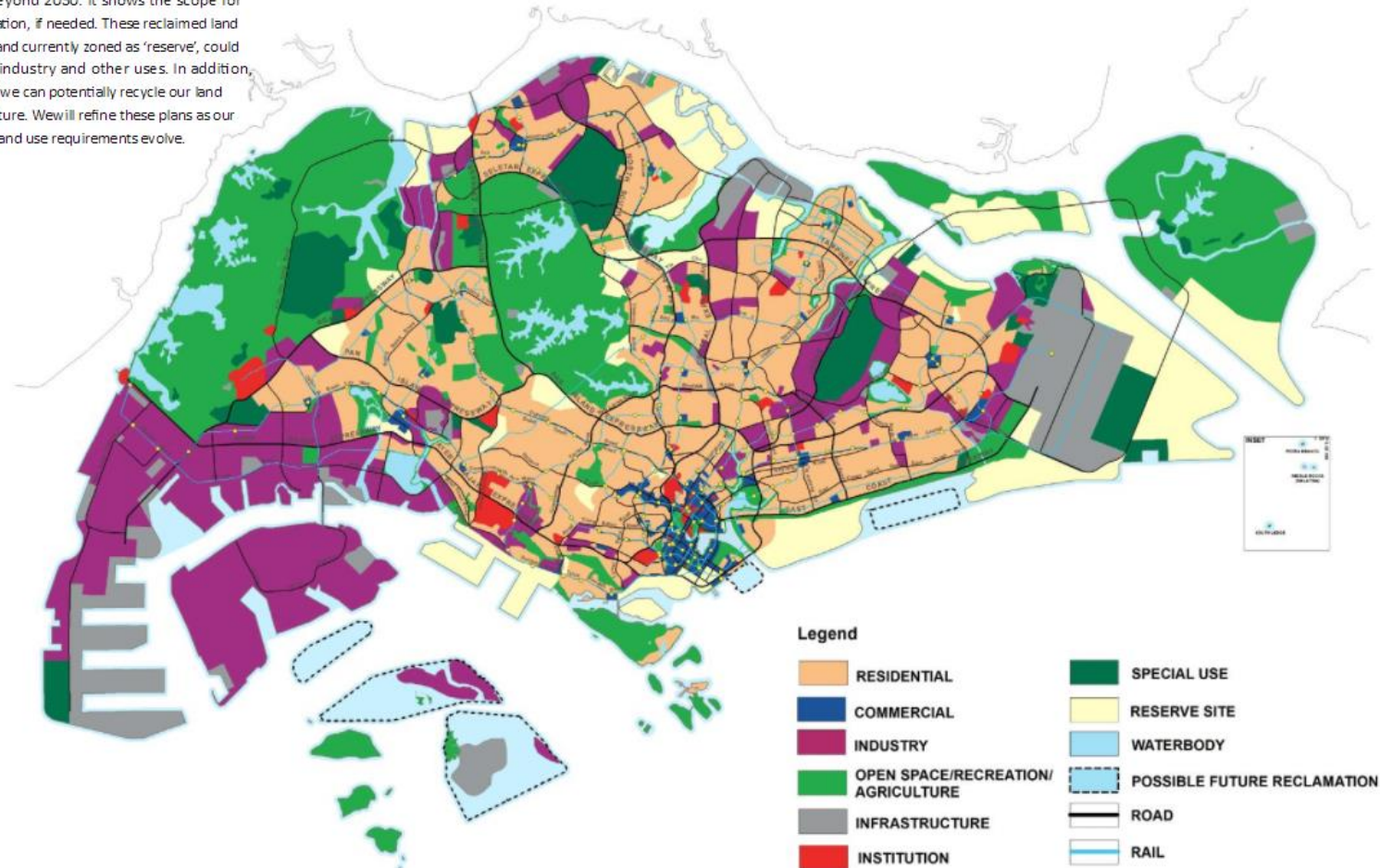
CONTENT OF PRESENTATION

- 1. Freight in transport modelling**
2. Logistics planning and optimisation
3. Case studies
4. Integration

SOME PROBLEMS ARE TOO COMPLEX FOR A SPREADSHEET...

Land Use Beyond 2030

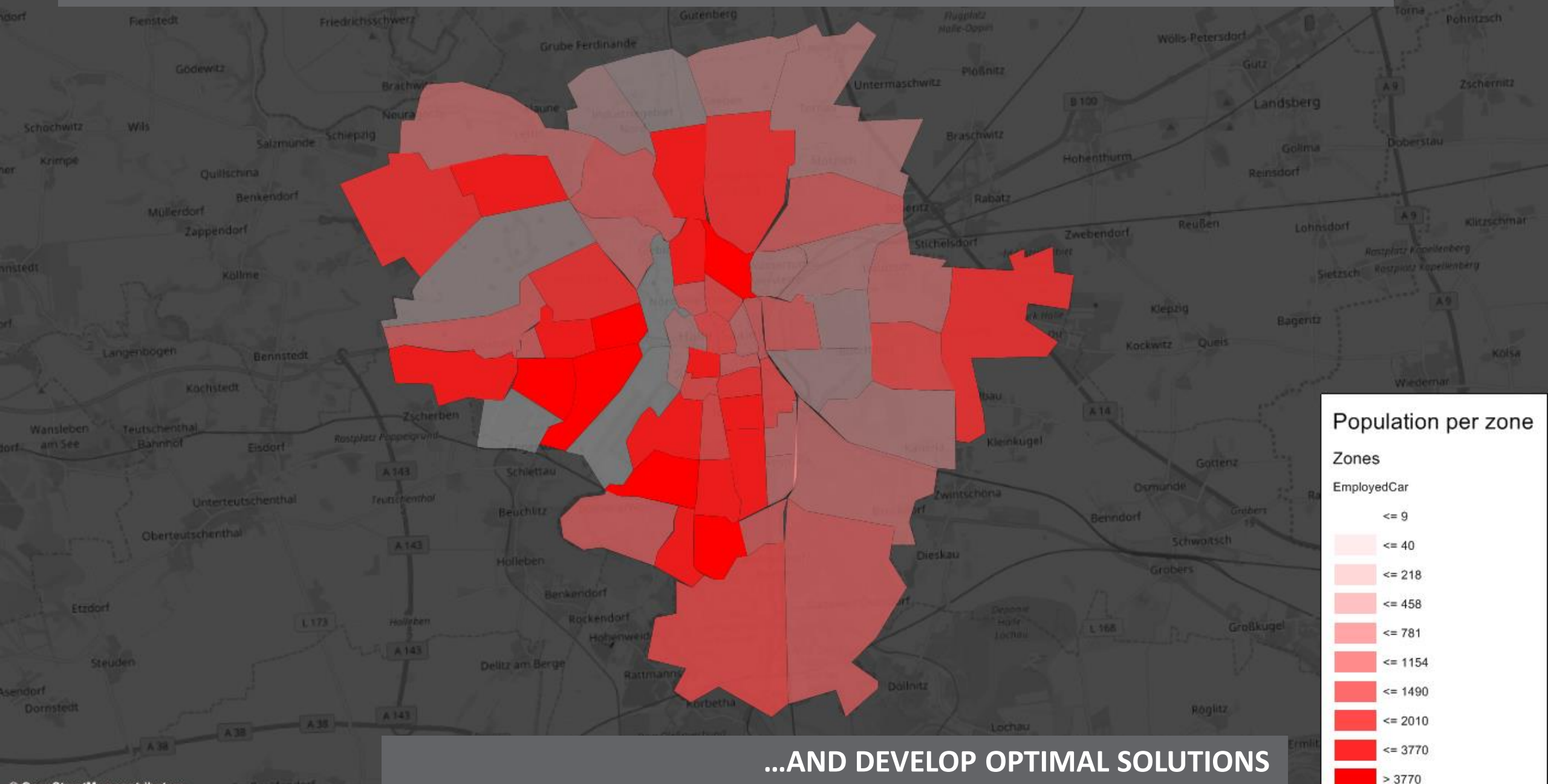
This map illustrates the likely profile of Singapore and possible land use allocation beyond 2030. It shows the scope for additional land reclamation, if needed. These reclaimed land parcels, including the land currently zoned as 'reserve', could be used for housing, industry and other uses. In addition, the map indicates how we can potentially recycle our land for other uses in the future. We will refine these plans as our population needs and land use requirements evolve.



<http://www.mnd.gov.sg/landuseplan/e-book/files/assets/basic-html/index.html#page1>

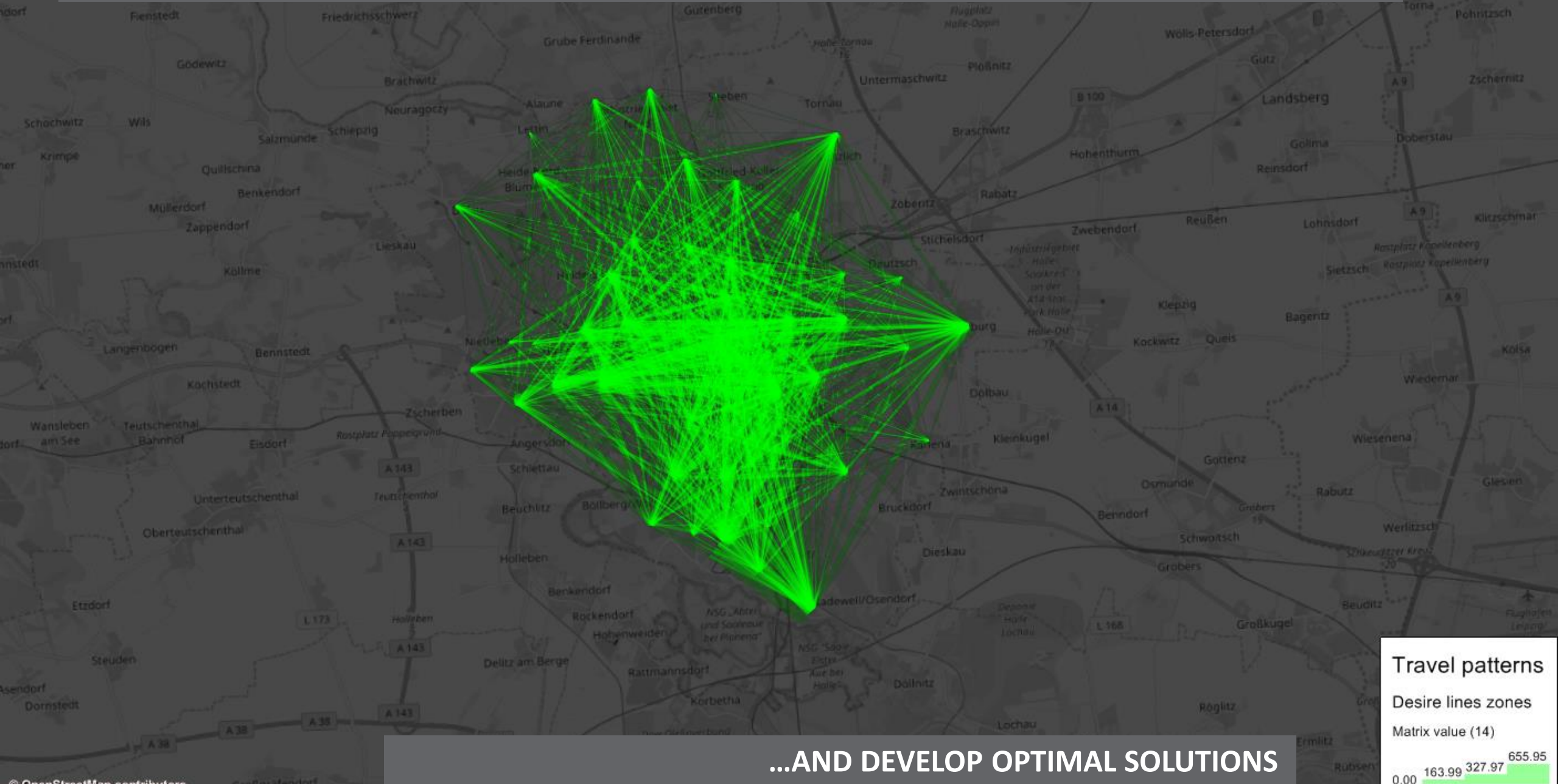
...AND TOO IMPORTANT TO LEAVE TO CHANCE

TRANSPORT MODEL – A DIGITAL REPLICCA TO DIAGNOSE PROBLEMS...



...AND DEVELOP OPTIMAL SOLUTIONS

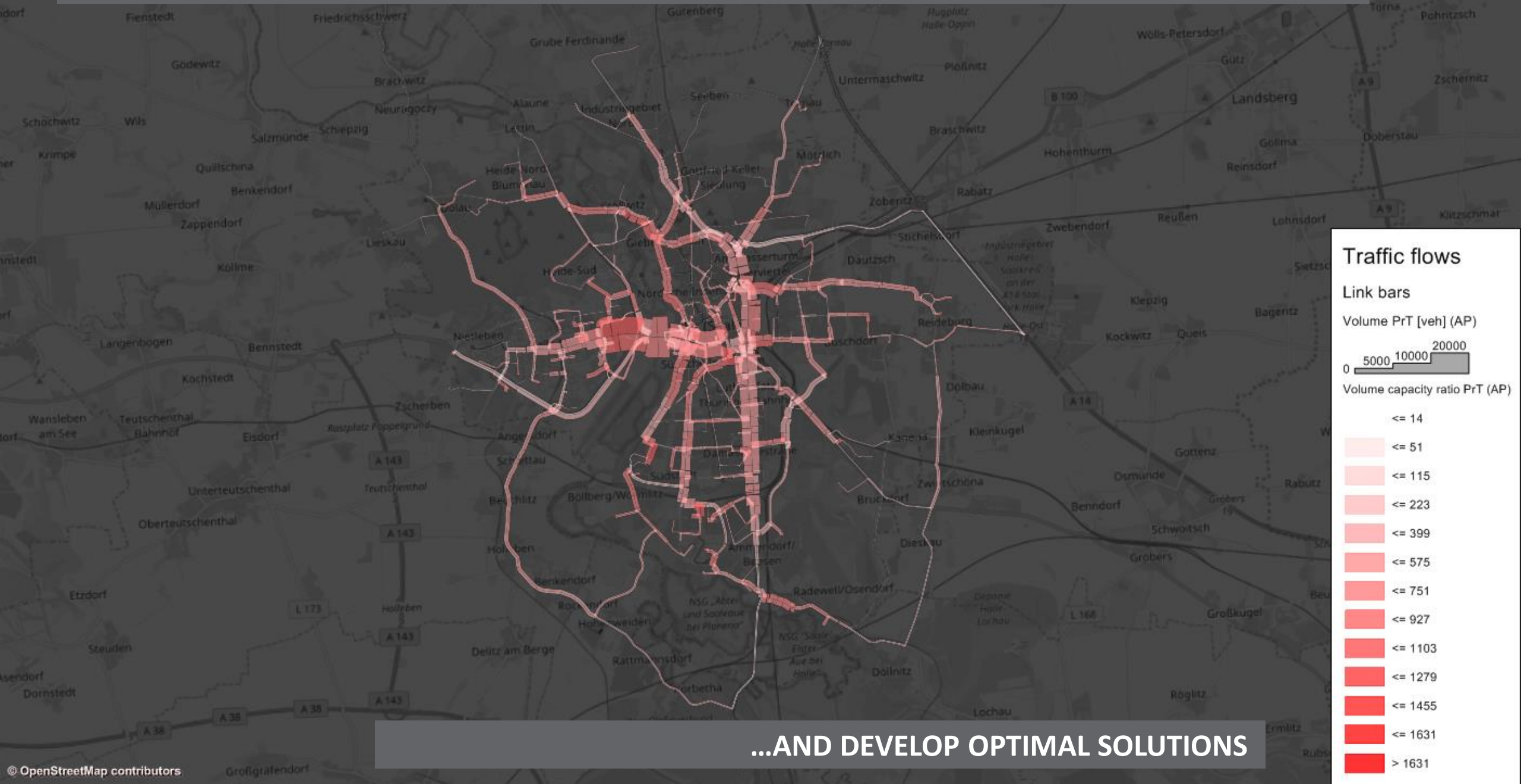
TRANSPORT MODEL – A DIGITAL REPLIC TO DIAGNOSE PROBLEMS...



...AND DEVELOP OPTIMAL SOLUTIONS

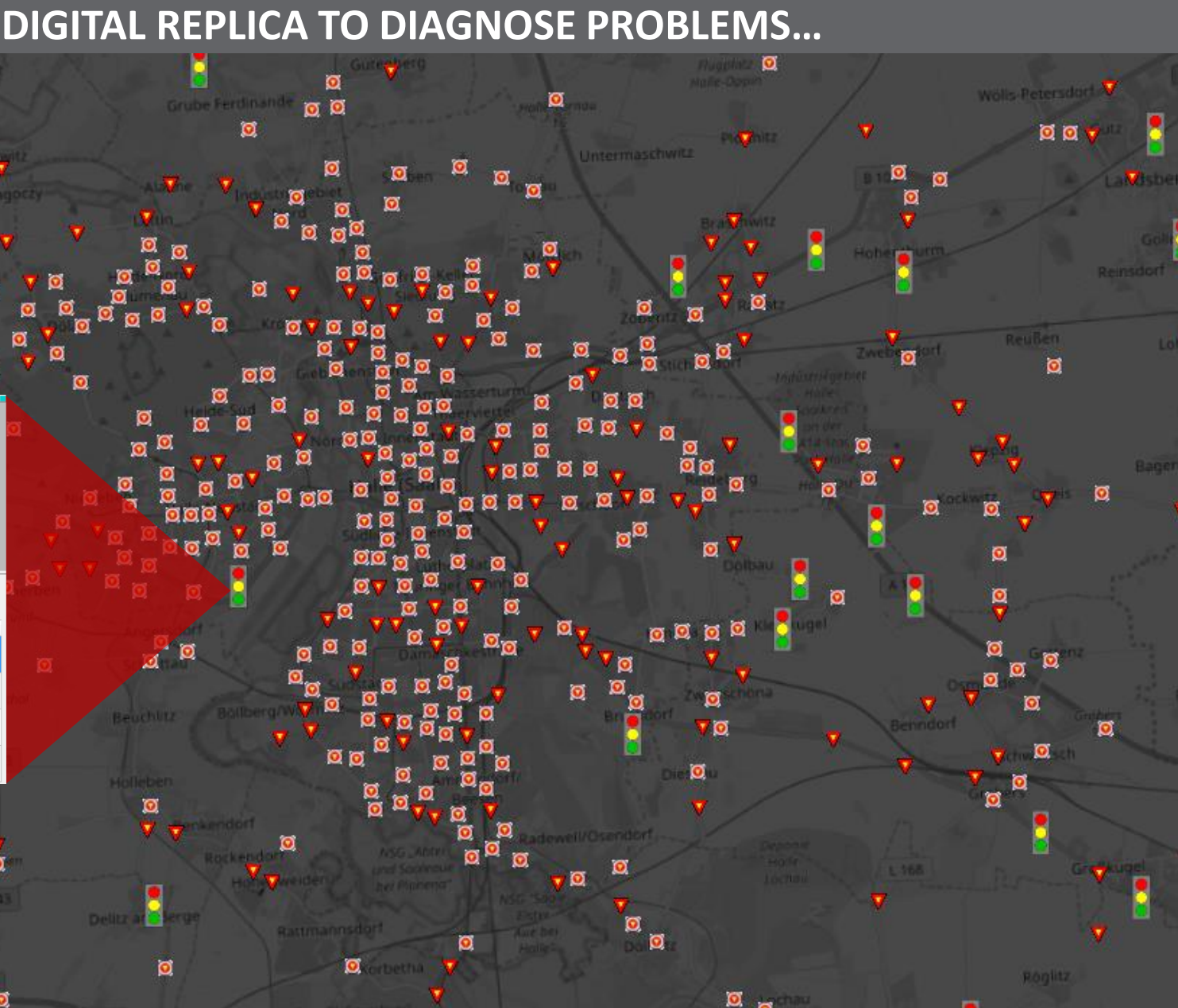
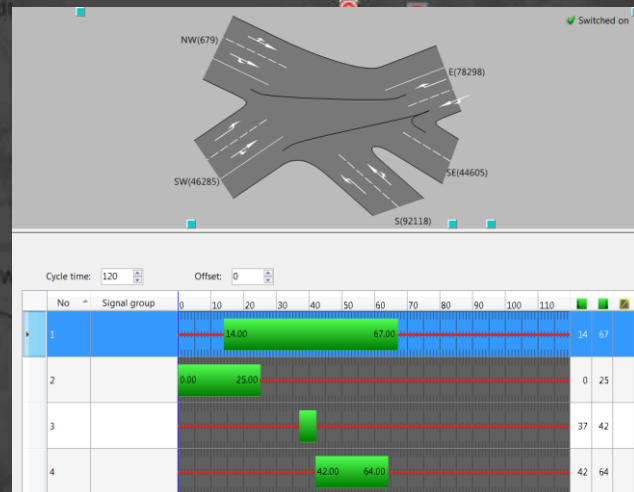


TRANSPORT MODEL – A DIGITAL REPLICA TO DIAGNOSE PROBLEMS...



...AND DEVELOP OPTIMAL SOLUTIONS

TRANSPORT MODEL – A DIGITAL REPLICA TO DIAGNOSE PROBLEMS...



Junction control data

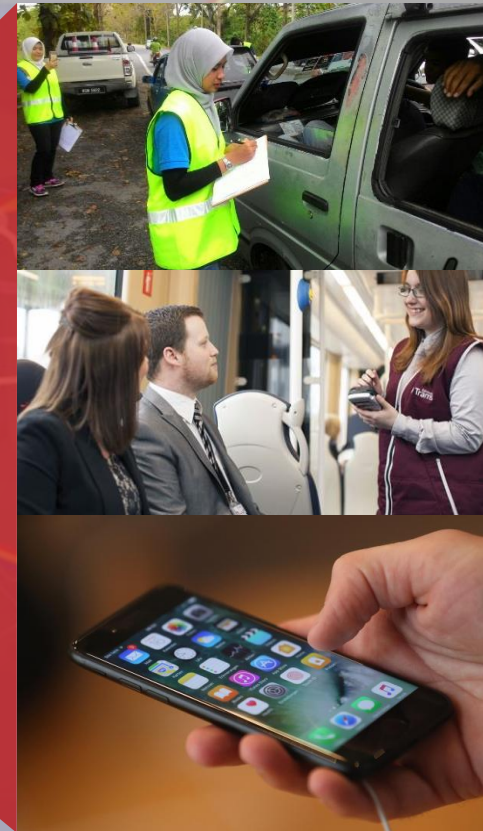
Nodes

Control type

- × Uncontrolled
- ⊙ Two-way stop
- 🚦 Signalized
- ⊙ All-way stop
- 🔄 Roundabout
- 🚦 Two-way yield

...AND DEVELOP OPTIMAL SOLUTIONS

TRANSPORT MODEL – A DIGITAL REPLICA TO DIAGNOSE PROBLEMS...



...AND DEVELOP OPTIMAL SOLUTIONS

WHAT ABOUT FREIGHT?

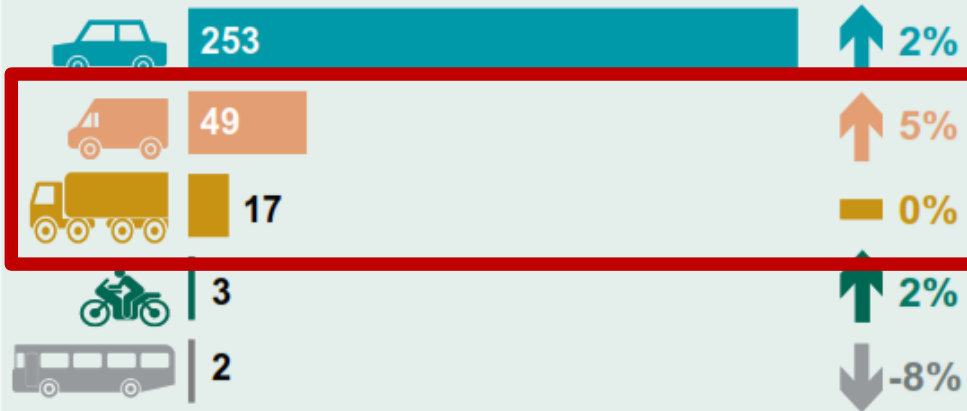


Road traffic by vehicle type [TSGB0705](#)

Billion vehicle miles travelled, Great Britain: 2016

Of the 324 billion vehicle miles travelled:

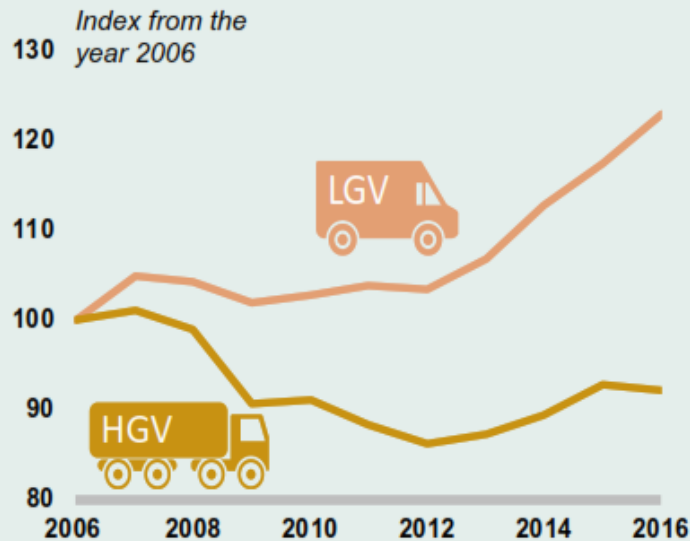
% change
from 2015



%15

%5

Van traffic has grown faster than any other vehicle type since 2006.



Overall, lorry traffic remained broadly stable between 2015 and 2016.

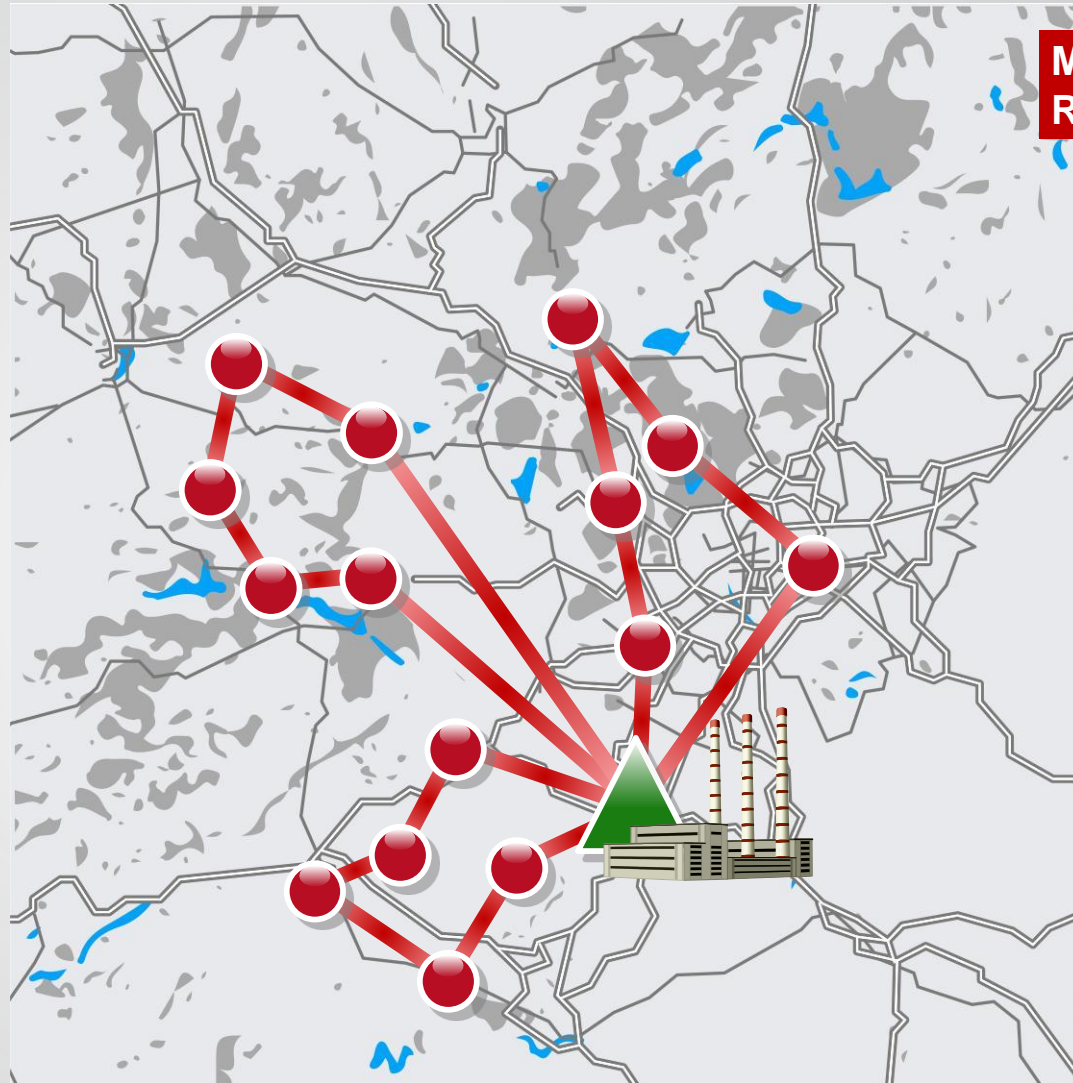
Share of freight transport



CONTENT OF PRESENTATION

1. Freight in transport modelling
2. Logistics planning and optimisation
3. Case studies
4. Integration

Why Route Optimisation?



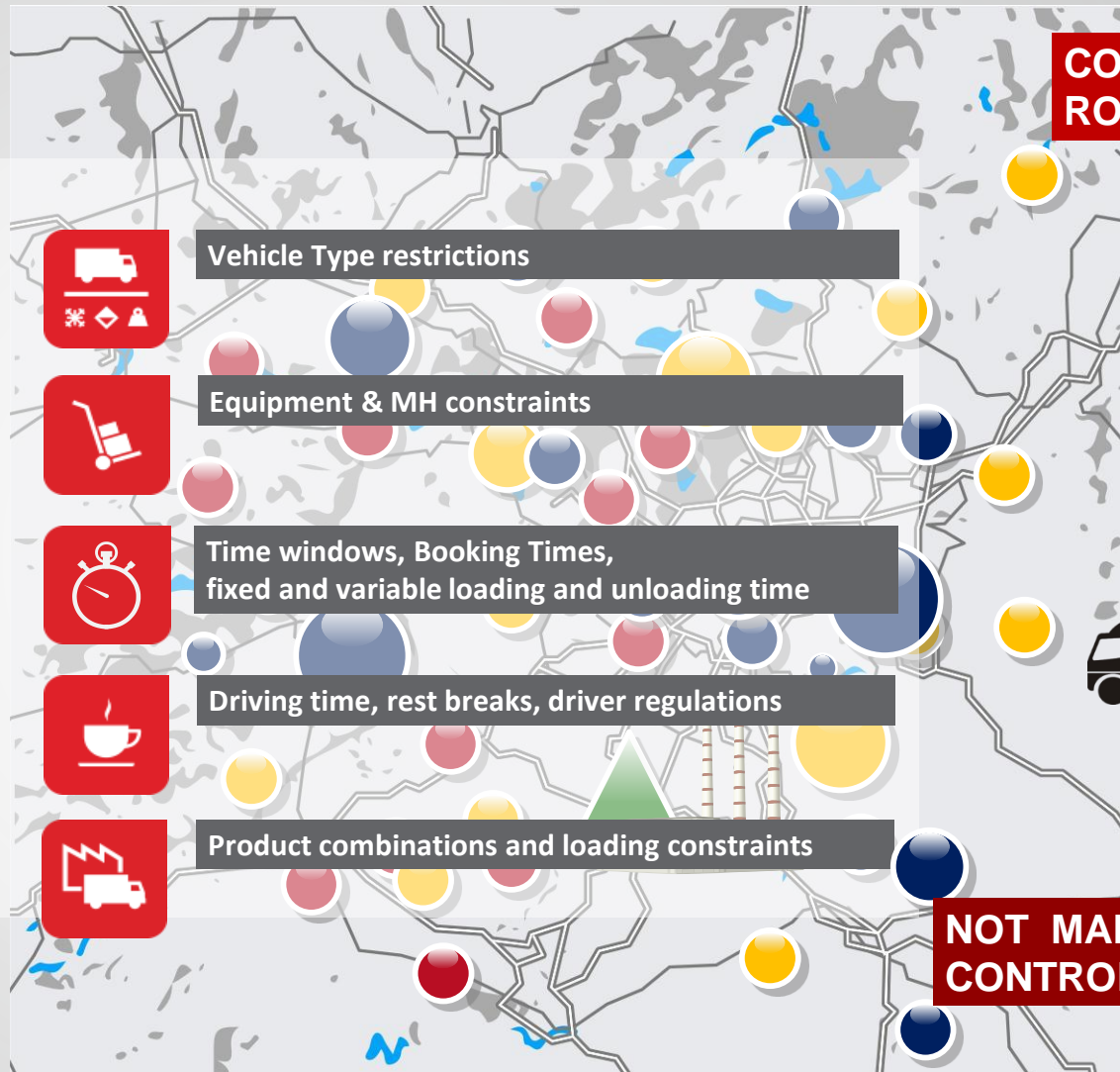
**MANUAL
ROUTE PLANNING**



**PLANNER
CONTROL**



Why Route Optimisation?



**COMPLEX
ROUTE PLANNING**



**NOT MANUALLY
CONTROLLABLE**



A close-up, slightly blurred photograph of a woman and a man looking at a map. The woman, on the right, has long brown hair and is wearing a white top. The man, on the left, is wearing a grey sweater. They are both pointing at a map that is spread out on a surface. The map shows a city with a river and various streets. The background is a plain, light-colored wall. The overall tone is professional and informative.

Maps help to Visualise Data

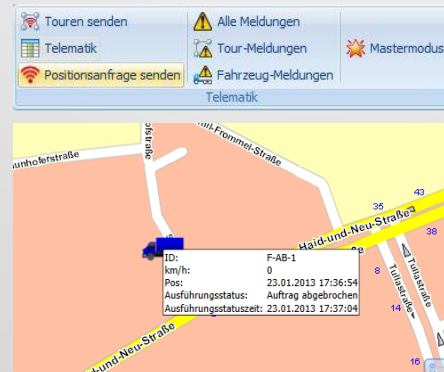
PTV GROUP www.ptvgroup.com

- City level
- Country and Continental Maps
- Various Mapping Databases



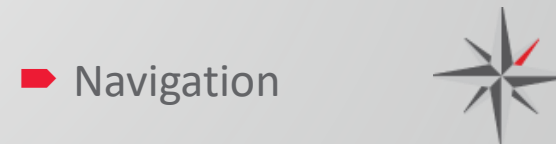
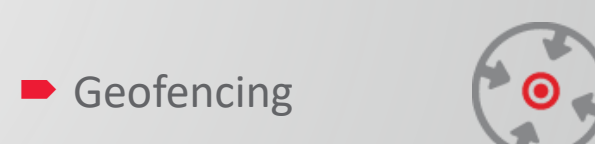
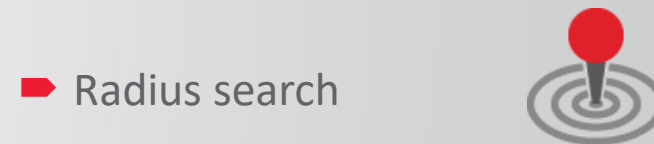
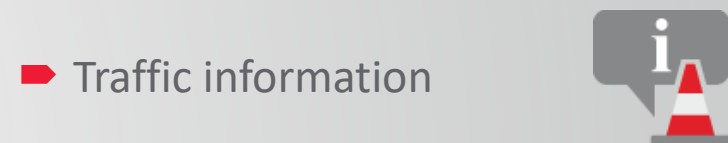
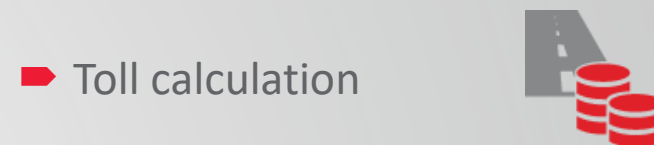
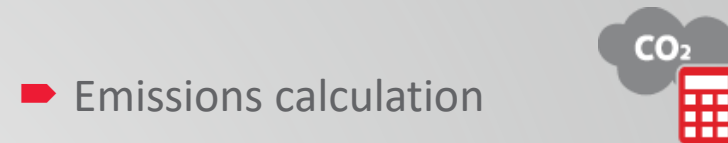
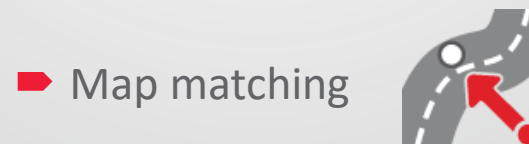
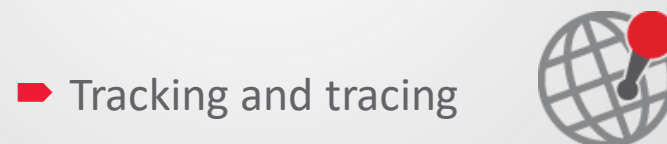
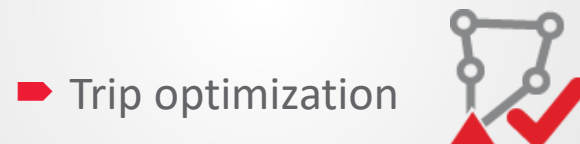
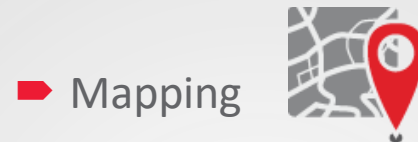
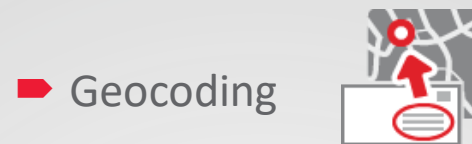
Navigation:

- Transfer of the planned routes
- Current status update
- Evaluate delays and deviations
- Keep your Customer informed
- Route / Re-Route your Driver
- Compliance/plan v actual
- Exchange of information with the driver
- Manage the Plan & Keep Control



Connecting to Live Telematics Data

Use Cases Overview



WHAT ABOUT MULTI-MODAL TRANSPORT PLANNING?





CONTENT OF PRESENTATION

1. Freight in transport modelling
2. Logistics planning and optimisation
3. Case studies
4. Integration

Figure 1: Model areas and highway zone detail

- Transport for West Midlands
- Multi-modal transport model
- Includes cars, bus, rail, light rail, walking, cycling

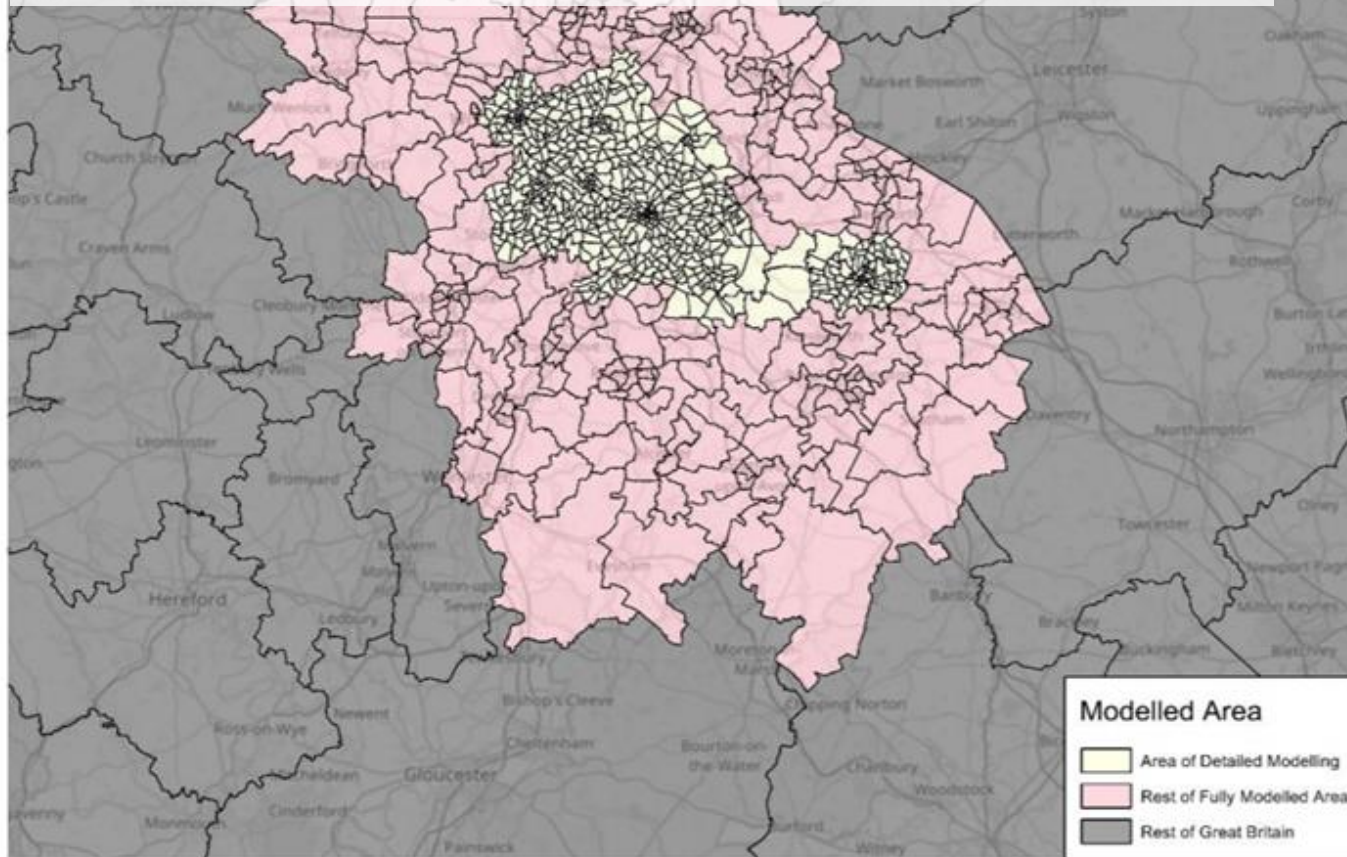


Image Source: <https://www.tfwm.org.uk>



Figure 1: Model areas and highway zone detail

- West Midlands region with 5+ million population
- 1,000 geographical zones

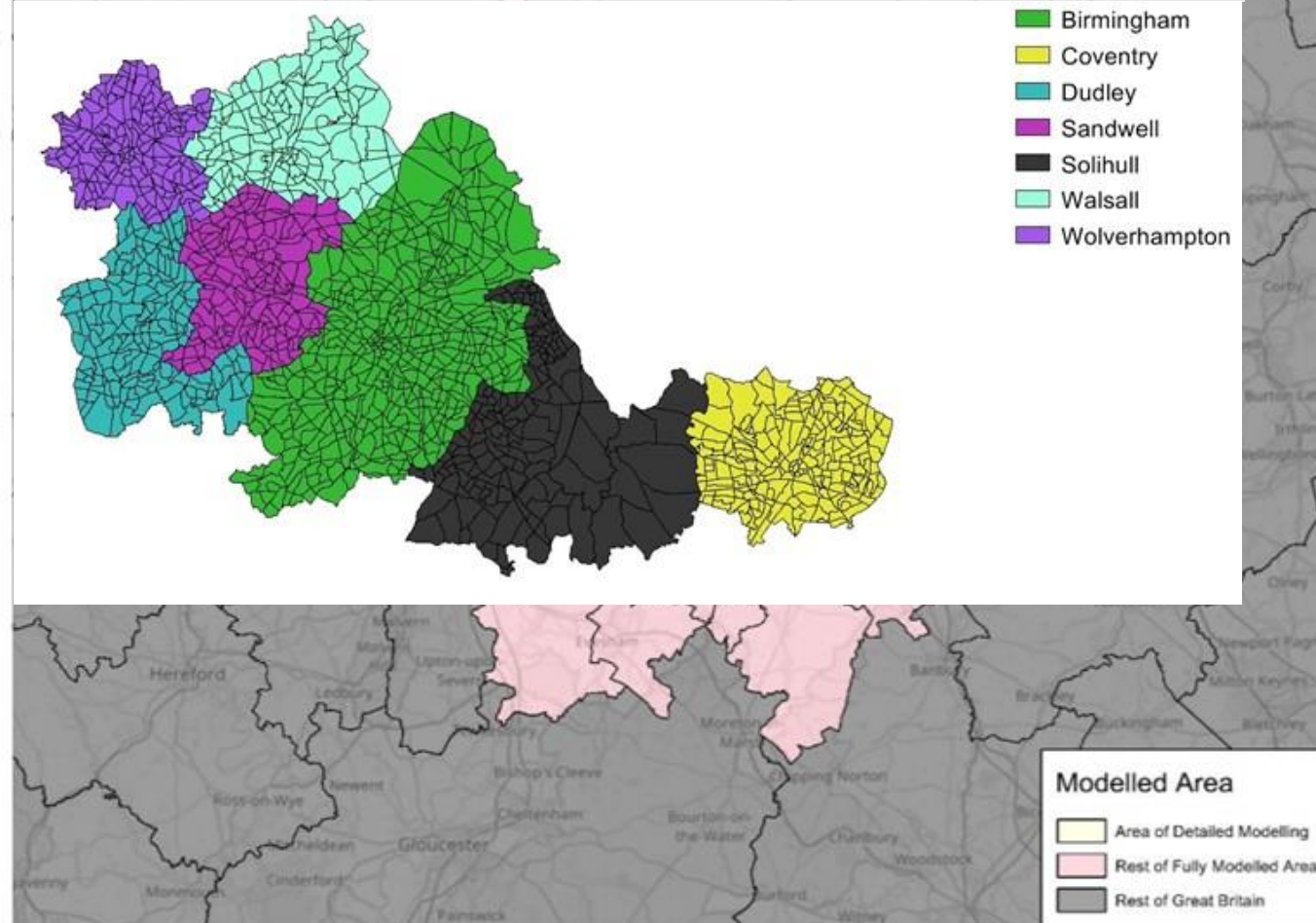


Image Source: <https://www.tfwm.org.uk>



Birmingham St Mary's Hospice Raise £71K with Optimised Tree Collections

The Most Magical Time of the Year

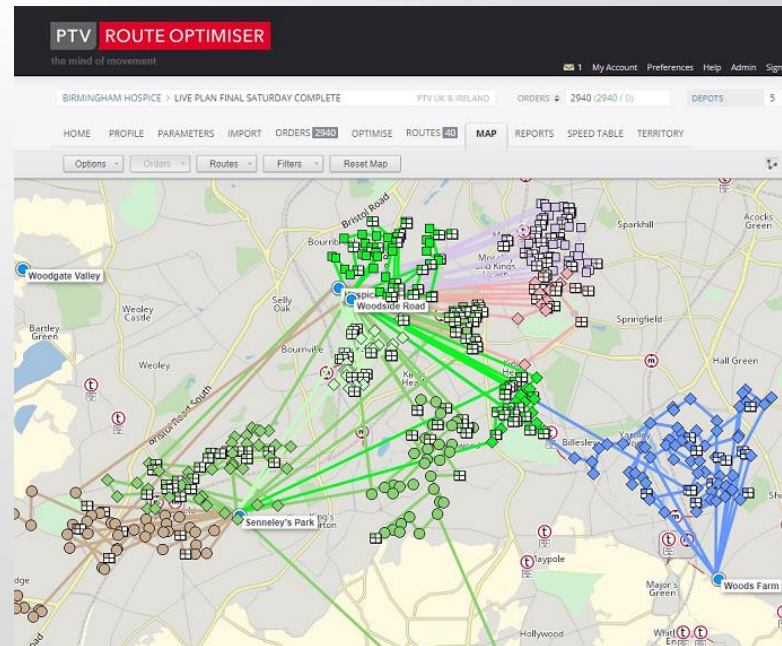
- Almost every home buys a Christmas Tree
- Project starts 6 months in advance
- Volunteer tree collectors and vehicles are recruited
- Trees chipped at a site for compost and biomass fuel



Birmingham St Mary's Hospice Raise £71K with Optimised Tree Collections

Treecycling 2019 Key Facts

- 3,726 households booked to have their trees collected
- £71,882.00 was raised by the project
- 39 vans were donated by local companies
- 149 volunteers gave up their weekend to collect the trees
- Minimise number of vehicles, distances, volunteers
- Private business are more cost conscious than charities...





CONTENT OF PRESENTATION

1. Freight in transport modelling
2. Logistics planning and optimisation
3. Case study
4. Integration

Logistics Models



Multi-depot planning

Can help:

- Fleet assignment to complex O/D trips
- Optimal location/usage of depots
- Costs and emissions major consideration

Don't take into account:

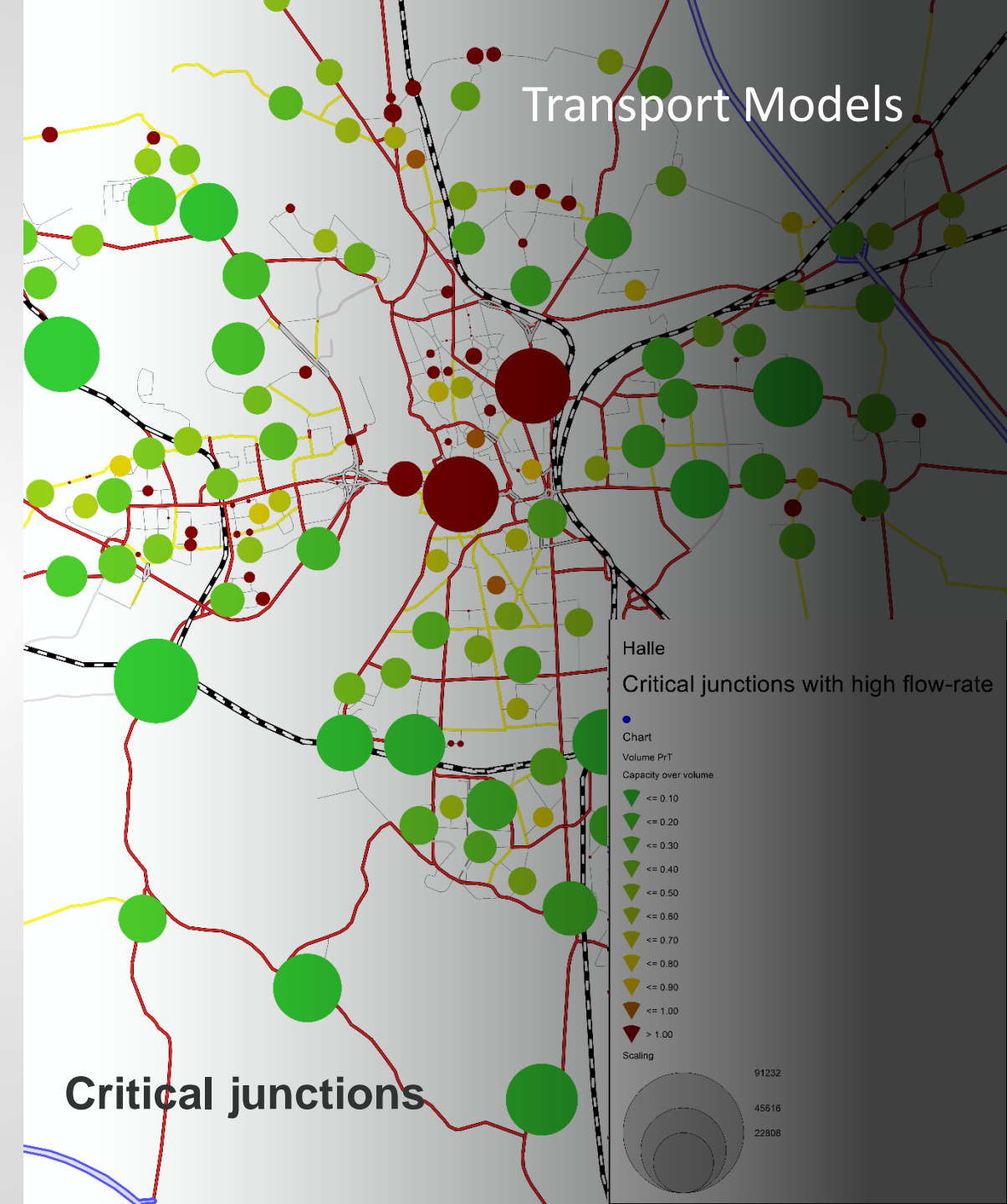
- Road network capacity
- Public authority policies
- Congestion in real-time or future

Can help:

- Impact of future freight plans on roads
- Test interventions, policies and their impact
- Holistic impact assessment

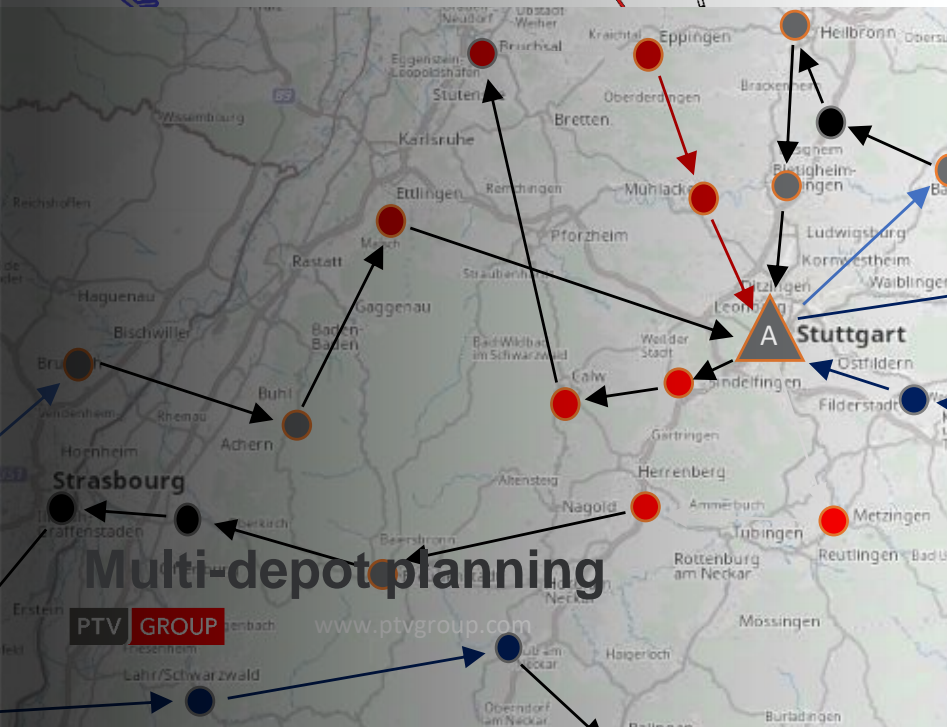
Don't take into account:

- Detailed freight O/D or routing
- Trip purpose and freight type
- Future O/D and routing



Benefits of collaboration

Critical junctions



For Transport Planners

- More detailed freight data
- Better understanding of freight planning
- Transport plans and policies that integrate freight
- **Minimise impact on performance, air quality and safety**

For Freight Planners

- Obtain traffic flow and road capacity/performance data
- Increase efficiency of depots and route optimisation
- Reduce delays, costs, emissions and accidents
- **Influence policy rather than just react to it**

COLLABORATION IS KEY!

Making better use of transport network!

More efficient fleet and resource planning!

PTV

GROUP

Responsibility
to deliver and
manage
infrastructure



Plan the
future
infrastructure



Improved
journey times,
emissions and
cost



Faster and
reliable
delivery



Stakeholder
representation



Leading UK
Logistics

Lower costs
and higher
profits



**TRANSPORT
AUTHORITIES**

**POLICY
MAKERS**

**TRANSPORT
PLANNERS**

PASSENGERS

**FREIGHT
CUSTOMERS**

**INDUSTRY
REPRESENTATI
VES**

**LOGISTICS
INDUSTRY**

A high-angle, wide shot of a suspension bridge spanning a river. A red truck is driving towards the viewer on the bridge. The sun is setting on the left side of the frame, casting a warm glow over the scene. The bridge is surrounded by dense green trees and foliage. The sky is filled with soft, orange and yellow clouds.

THANK YOU!